

Datasheet for ABIN1534080
anti-DLC1 antibody (AA 61-110)

2 Images

[Go to Product page](#)

Overview

Quantity:	100 µg
Target:	DLC1
Binding Specificity:	AA 61-110
Reactivity:	Human, Mouse, Rat
Host:	Rabbit
Clonality:	Polyclonal
Conjugate:	This DLC1 antibody is un-conjugated
Application:	Immunohistochemistry (IHC), ELISA, Immunofluorescence (IF)

Product Details

Immunogen:	The antiserum was produced against synthesized peptide derived from human RHG07.
Isotype:	IgG
Specificity:	RHG07 Antibody detects endogenous levels of total RHG07 protein.
Purification:	The antibody was purified from rabbit antiserum by affinity-chromatography using immunogen.
Purity:	> 95 %

Target Details

Target:	DLC1
Abstract:	DLC1 Products
Background:	Synonyms: Rho-type GTPase-activating protein 7, Deleted in liver cancer 1 protein, Dlc-1, HP

Target Details

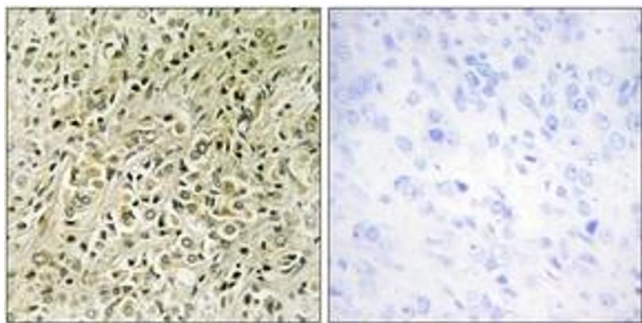
	protein, StAR-related lipid transfer protein 12, StARD12, START domain-containing protein 12 NCBI Gene Symbol: RHG07
Molecular Weight:	122 kDa
Gene ID:	10395
OMIM:	604258
UniProt:	Q96QB1
Pathways:	Tube Formation, Positive Regulation of Endopeptidase Activity

Application Details

Application Notes:	IHC: 1:50~1:100 IF: 1:100~1:500 ELISA: 1:10000
Comment:	Unigene-Number: Hs.134296. Hs.720057. (NCBI Gene Symbol: RHG07)
Restrictions:	For Research Use only

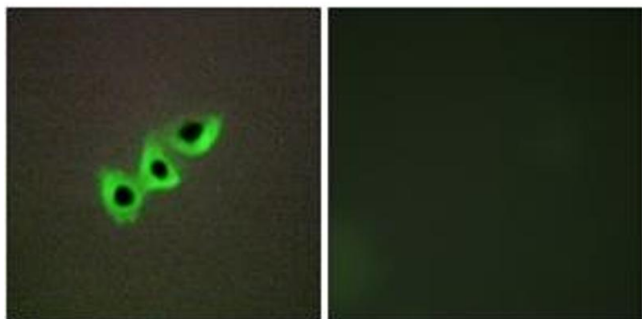
Handling

Format:	Liquid
Concentration:	1 mg/mL
Buffer:	phosphate buffered saline (without Mg ²⁺ and Ca ²⁺), pH 7.4, 150 mM NaCl, 0.02 % sodium azide and 50 % glycerol.
Preservative:	Sodium azide
Precaution of Use:	This product contains sodium azide: a POISONOUS AND HAZARDOUS SUBSTANCE which should be handled by trained staff only.
Storage:	-20 °C
Storage Comment:	Stable at -20°C for at least 1 year.
Expiry Date:	12 months



Immunohistochemistry

Image 1. Immunohistochemistry analysis of paraffin-embedded human prostate carcinoma tissue, using RHG07 Antibody. The picture on the right is treated with the synthesized peptide.



Immunofluorescence

Image 2. Immunofluorescence analysis of A549 cells, using RHG07 Antibody. The picture on the right is treated with the synthesized peptide.