



[Go to Product page](#)

Datasheet for ABIN1534083  
**anti-PSAT1 antibody (AA 341-390)**

2 Images

Overview

|                      |   |
|----------------------|---|
| Quantity:            | 100 µg  |
| Target:              | PSAT1   |
| Binding Specificity: | AA 341-390  |
| Reactivity:          | Human, Mouse, Rat                                     |
| Host:                | Rabbit  |
| Clonality:           | Polyclonal  |
| Conjugate:           | This PSAT1 antibody is un-conjugated                  |
| Application:         | Western Blotting (WB), ELISA, Immunofluorescence (IF) |

Product Details

|               |   |
|---------------|---|
| Immunogen:    | The antiserum was produced against synthesized peptide derived from human SERC2.            |
| Isotype:      | IgG   |
| Specificity:  | SERC2 Antibody detects endogenous levels of total SERC2 protein.                            |
| Purification: | The antibody was purified from rabbit antiserum by affinity-chromatography using immunogen. |
| Purity:       | > 95 %  |

Target Details

|                   |   |
|-------------------|---|
| Target:           | PSAT1   |
| Alternative Name: | SERC2 ( <a href="#">PSAT1 Products</a> )        |
| Background:       | Synonyms: Tumor differentially expressed 2-like |

## Target Details

---

NCBI Gene Symbol: SERC2

Molecular Weight: 50 kDa

Gene ID: 347735

UniProt: [Q96SA4](#)

Pathways: [Warburg Effect](#)

## Application Details

---

Application Notes: WB: 1:500~1:1000 IF: 1:100~1:500 ELISA: 1:40000

Comment: Unigene-Number: Hs.270655 (NCBI Gene Symbol: SERC2)

Restrictions: For Research Use only

## Handling

---

Format: Liquid

Concentration: 1 mg/mL

Buffer: phosphate buffered saline (without Mg<sup>2+</sup> and Ca<sup>2+</sup>), pH 7.4, 150 mM NaCl, 0.02 % sodium azide and 50 % glycerol.

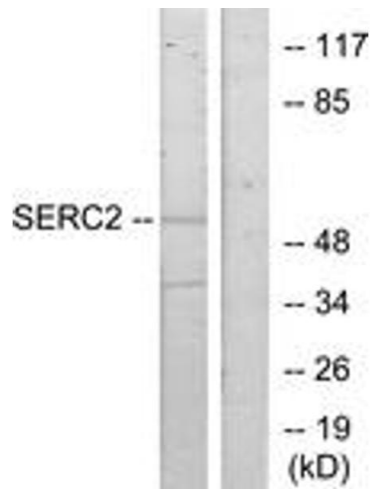
Preservative: Sodium azide

Precaution of Use: This product contains sodium azide: a POISONOUS AND HAZARDOUS SUBSTANCE which should be handled by trained staff only.

Storage: -20 °C

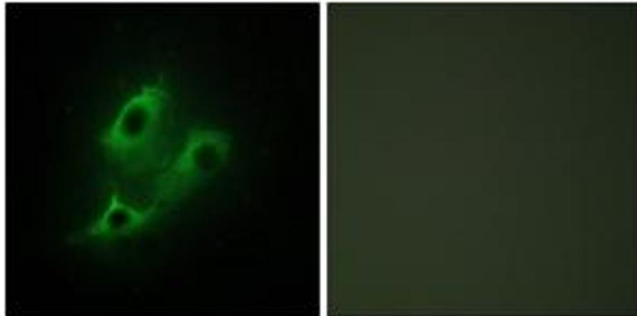
Storage Comment: Stable at -20°C for at least 1 year.

Expiry Date: 12 months



### Western Blotting

**Image 1.** Western blot analysis of extracts from HeLa cells, using SERC2 Antibody. The lane on the right is treated with the synthesized peptide.



### Immunofluorescence

**Image 2.** Immunofluorescence analysis of NIH-3T3 cells, using SERC2 Antibody. The picture on the right is treated with the synthesized peptide.