

Datasheet for ABIN1534087
anti-DUSP9 antibody (AA 151-200)[Go to Product page](#)

3 Images

Overview

| | |
|----------------------|---|
| Quantity: | 100 µg |
| Target: | DUSP9 |
| Binding Specificity: | AA 151-200 |
| Reactivity: | Human, Mouse, Rat |
| Host: | Rabbit |
| Clonality: | Polyclonal |
| Conjugate: | This DUSP9 antibody is un-conjugated |
| Application: | Western Blotting (WB), ELISA, Immunohistochemistry (IHC), Immunofluorescence (IF) |

Product Details

| | |
|---------------|---|
| Immunogen: | The antiserum was produced against synthesized peptide derived from human DUSP9. |
| Isotype: | IgG |
| Specificity: | DUSP9 Antibody detects endogenous levels of total DUSP9 protein. |
| Purification: | The antibody was purified from rabbit antiserum by affinity-chromatography using immunogen. |
| Purity: | > 95 % |

Target Details

| | |
|-------------------|--|
| Target: | DUSP9 |
| Alternative Name: | DUSP9 (DUSP9 Products) |
| Background: | Synonyms: Mitogen-activated protein kinase phosphatase 4, MAP kinase phosphatase 4, MKP- |

Target Details

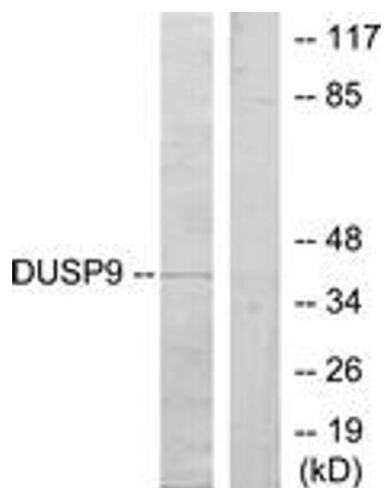
| | |
|-------------------|-------------------------------|
| | 4, NCBI Gene Symbol: DUSP9 |
| Molecular Weight: | 41 kDa |
| Gene ID: | 1852 |
| OMIM: | 300134 |
| UniProt: | Q99956 |

Application Details

| | |
|--------------------|---|
| Application Notes: | WB: 1:500~1:1000 IHC: 1:50~1:100 IF: 1:100~1:500 ELISA: 1:20000 |
| Comment: | Unigene-Number: Hs.144879, Hs.605100 (NCBI Gene Symbol: DUSP9) |
| Restrictions: | For Research Use only |

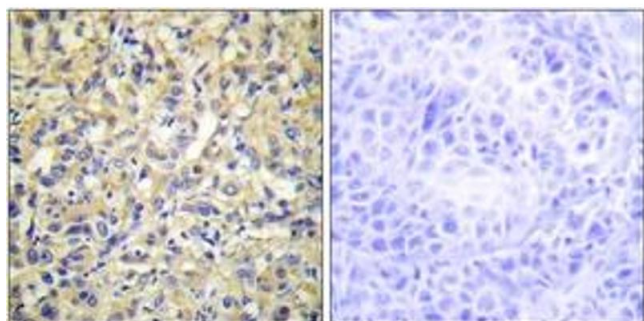
Handling

| | |
|--------------------|---|
| Format: | Liquid |
| Concentration: | 1 mg/mL |
| Buffer: | phosphate buffered saline (without Mg ²⁺ and Ca ²⁺), pH 7.4, 150 mM NaCl, 0.02 % sodium azide and 50 % glycerol. |
| Preservative: | Sodium azide |
| Precaution of Use: | This product contains sodium azide: a POISONOUS AND HAZARDOUS SUBSTANCE which should be handled by trained staff only. |
| Storage: | -20 °C |
| Storage Comment: | Stable at -20°C for at least 1 year. |
| Expiry Date: | 12 months |



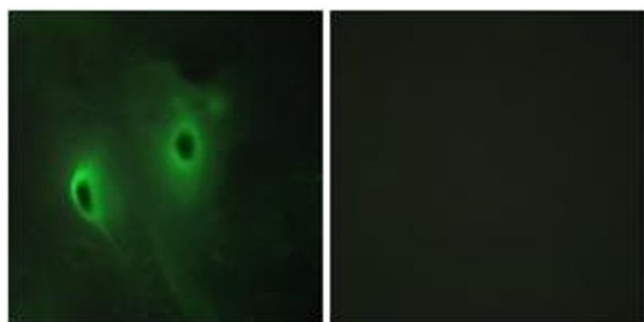
Western Blotting

Image 1. Western blot analysis of extracts from HeLa cells, using DUSP9 Antibody. The lane on the right is treated with the synthesized peptide.



Immunohistochemistry

Image 2. Immunohistochemistry analysis of paraffin-embedded human liver carcinoma tissue, using DUSP9 Antibody. The picture on the right is treated with the synthesized peptide.



Immunofluorescence

Image 3. Immunofluorescence analysis of HeLa cells, using DUSP9 Antibody. The picture on the right is treated with the synthesized peptide.