

Datasheet for ABIN1534096
anti-BEGAIN antibody (AA 511-560)[Go to Product page](#)

2 Images

Overview

Quantity:	100 µg
Target:	BEGAIN
Binding Specificity:	AA 511-560
Reactivity:	Human, Mouse, Rat
Host:	Rabbit
Clonality:	Polyclonal
Conjugate:	This BEGAIN antibody is un-conjugated
Application:	Immunohistochemistry (IHC), ELISA, Immunofluorescence (IF)

Product Details

Immunogen:	The antiserum was produced against synthesized peptide derived from human BEGAIN.
Isotype:	IgG
Specificity:	BEGIN Antibody detects endogenous levels of total BEGAIN protein.
Purification:	The antibody was purified from rabbit antiserum by affinity-chromatography using immunogen.
Purity:	> 95 %

Target Details

Target:	BEGAIN
Abstract:	BEGAIN Products
Background:	Synonyms: Brain-enriched guanylate kinase-associated protein, KIAA1446

Target Details

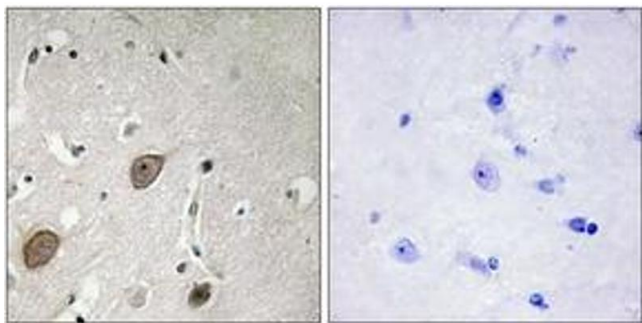
	NCBI Gene Symbol: BEGIN
Molecular Weight:	64 kDa
Gene ID:	57596
UniProt:	Q9BUH8

Application Details

Application Notes:	IHC: 1:50~1:100 IF: 1:100~1:500 ELISA: 1:1000
Comment:	Unigene-Number: Hs.720621 (NCBI Gene Symbol: BEGIN)
Restrictions:	For Research Use only

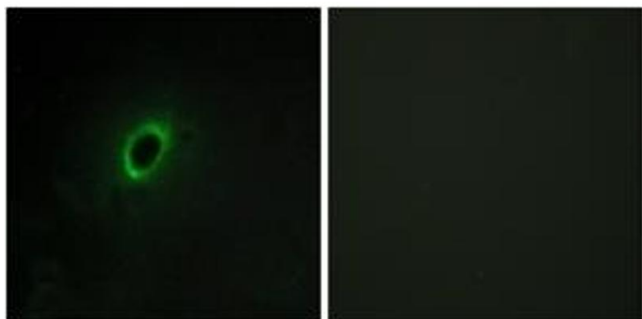
Handling

Format:	Liquid
Concentration:	1 mg/mL
Buffer:	phosphate buffered saline (without Mg ²⁺ and Ca ²⁺), pH 7.4, 150 mM NaCl, 0.02 % sodium azide and 50 % glycerol.
Preservative:	Sodium azide
Precaution of Use:	This product contains sodium azide: a POISONOUS AND HAZARDOUS SUBSTANCE which should be handled by trained staff only.
Storage:	-20 °C
Storage Comment:	Stable at -20°C for at least 1 year.
Expiry Date:	12 months



Immunohistochemistry

Image 1. Immunohistochemistry analysis of paraffin-embedded human brain tissue, using BEGIN Antibody. The picture on the right is treated with the synthesized peptide.



Immunofluorescence

Image 2. Immunofluorescence analysis of HeLa cells, using BEGIN Antibody. The picture on the right is treated with the synthesized peptide.