



[Go to Product page](#)

Datasheet for ABIN1534102  
**anti-DUSP16 antibody (AA 571-620)**

2 Images

Overview

Quantity:	100 µL
Target:	DUSP16
Binding Specificity:	AA 571-620
Reactivity:	Human, Mouse
Host:	Rabbit
Clonality:	Polyclonal
Conjugate:	This DUSP16 antibody is un-conjugated
Application:	Western Blotting (WB), ELISA, Immunofluorescence (IF)

Product Details

Immunogen:	The antiserum was produced against synthesized peptide derived from human DUSP16.
Isotype:	IgG
Specificity:	DUSP16 Antibody detects endogenous levels of total DUSP16 protein.
Purification:	The antibody was purified from rabbit antiserum by affinity-chromatography using immunogen.
Purity:	> 95 %

Target Details

Target:	DUSP16
Alternative Name:	DUSP16 ( <a href="#">DUSP16 Products</a> )
Background:	Synonyms: Dual specificity protein phosphatase 16, DUS16, DUSP16, KIAA1700, MAP kinase

## Target Details

---

phosphatase 7, MAP kinase phosphatase-7, Mitogen-activated protein kinase phosphatase 7, MKP7  
NCBI Gene Symbol: DUSP16

Molecular Weight: 73 kDa

Gene ID: 80824

OMIM: 607175

UniProt: [Q9BY84](#)

## Application Details

---

Application Notes: WB: 1:500~1:1000 IF: 1:100~1:500 ELISA: 1:10000

Comment: Unigene-Number: Hs.536535 (NCBI Gene Symbol: DUSP16)

Restrictions: For Research Use only

## Handling

---

Format: Liquid

Concentration: 1 mg/mL

Buffer: phosphate buffered saline (without Mg<sup>2+</sup> and Ca<sup>2+</sup>), pH 7.4, 150 mM NaCl, 0.02 % sodium azide and 50 % glycerol.

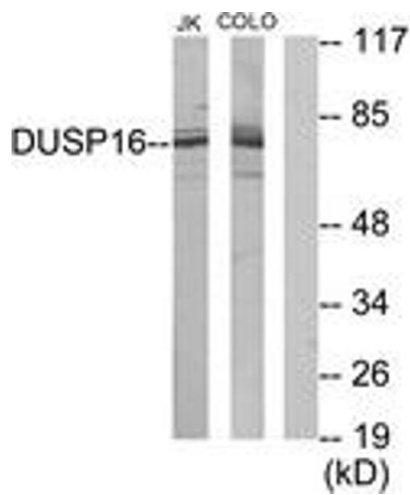
Preservative: Sodium azide

Precaution of Use: This product contains sodium azide: a POISONOUS AND HAZARDOUS SUBSTANCE which should be handled by trained staff only.

Storage: -20 °C

Storage Comment: Stable at -20°C for at least 1 year.

Expiry Date: 12 months



### Western Blotting

**Image 1.** Western blot analysis of extracts from Jurkat/COLO205 cells, using DUSP16 Antibody. The lane on the right is treated with the synthesized peptide.



### Immunofluorescence

**Image 2.** Immunofluorescence analysis of HepG2 cells, using DUSP16 Antibody. The picture on the right is treated with the synthesized peptide.