



[Go to Product page](#)

Datasheet for ABIN1534116
anti-Renin-2 antibody (AA 81-130)

2 Images

Overview

Quantity:	100 µg
Target:	Renin-2
Binding Specificity:	AA 81-130
Reactivity:	Mouse, Human
Host:	Rabbit
Clonality:	Polyclonal
Conjugate:	This Renin-2 antibody is un-conjugated
Application:	ELISA, Western Blotting (WB), Immunohistochemistry (IHC)

Product Details

Immunogen:	The antiserum was produced against synthesized peptide derived from human XRN2.
Isotype:	IgG
Specificity:	XRN2 Antibody detects endogenous levels of total XRN2 protein.
Purification:	The antibody was purified from rabbit antiserum by affinity-chromatography using immunogen.
Purity:	> 95 %

Target Details

Target:	Renin-2
Alternative Name:	RN2 (Renin-2 Products)
Background:	Synonyms: DHM1-like protein, DHP protein

Target Details

NCBI Gene Symbol: XRN2

Molecular Weight: 108 kDa

Gene ID: 22803

OMIM: 608851

UniProt: [Q9H0D6](#)

Pathways: [Peptide Hormone Metabolism](#)

Application Details

Application Notes: WB: 1:500~1:1000 IHC: 1:50~1:100 ELISA: 1:1000

Comment: Unigene-Number: Hs.255932 (NCBI Gene Symbol: XRN2)

Restrictions: For Research Use only

Handling

Format: Liquid

Concentration: 1 mg/mL

Buffer: phosphate buffered saline (without Mg²⁺ and Ca²⁺), pH 7.4, 150 mM NaCl, 0.02 % sodium azide and 50 % glycerol.

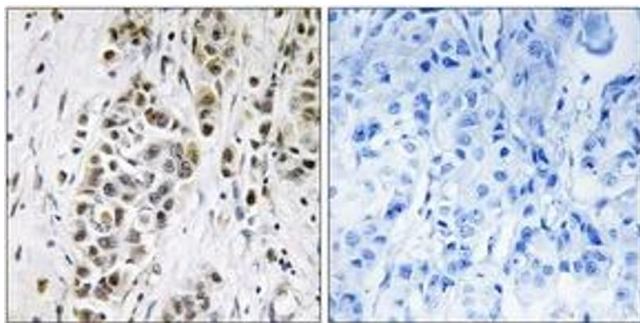
Preservative: Sodium azide

Precaution of Use: This product contains sodium azide: a POISONOUS AND HAZARDOUS SUBSTANCE which should be handled by trained staff only.

Storage: -20 °C

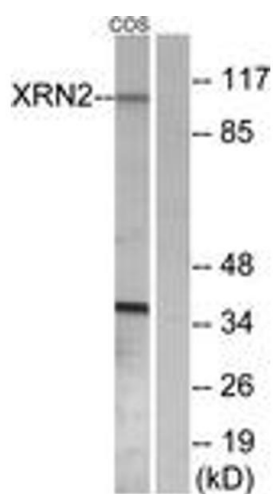
Storage Comment: Stable at -20°C for at least 1 year.

Expiry Date: 12 months



Immunohistochemistry

Image 1. Immunohistochemistry analysis of paraffin-embedded human breast carcinoma tissue, using XRN2 Antibody. The picture on the right is treated with the synthesized peptide.



Western Blotting

Image 2. Western blot analysis of extracts from COS7 cells, using XRN2 Antibody. The lane on the right is treated with the synthesized peptide.