

Datasheet for ABIN1534119
anti-C2orf40 antibody (AA 41-90)

2 Images

[Go to Product page](#)

Overview

| | |
|----------------------|--|
| Quantity: | 100 µg |
| Target: | C2orf40 |
| Binding Specificity: | AA 41-90 |
| Reactivity: | Human, Mouse |
| Host: | Rabbit |
| Clonality: | Polyclonal |
| Conjugate: | This C2orf40 antibody is un-conjugated |
| Application: | ELISA, Immunohistochemistry (IHC), Immunofluorescence (IF) |

Product Details

| | |
|---------------|---|
| Immunogen: | The antiserum was produced against synthesized peptide derived from human ECRG4. |
| Isotype: | IgG |
| Specificity: | ECRG4 Antibody detects endogenous levels of total ECRG4 protein. |
| Purification: | The antibody was purified from rabbit antiserum by affinity-chromatography using immunogen. |
| Purity: | > 95 % |

Target Details

| | |
|-------------------|---|
| Target: | C2orf40 |
| Alternative Name: | ECRG4 (C2orf40 Products) |
| Background: | Synonyms: Augurin, Esophageal cancer-related gene 4 protein, C2orf40, |

Target Details

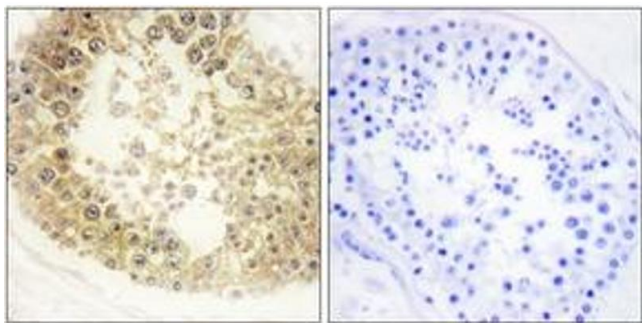
| | |
|-------------------|---------------------------|
| | NCBI Gene Symbol: C2orf40 |
| Molecular Weight: | 17 kDa |
| Gene ID: | 84417 |
| UniProt: | Q9H1Z8 |

Application Details

| | |
|--------------------|--|
| Application Notes: | IHC: 1:50~1:100 IF: 1:100~1:500 ELISA: 1:20000 |
| Comment: | Unigene-Number: Hs.43125 (NCBI Gene Symbol: C2orf40) |
| Restrictions: | For Research Use only |

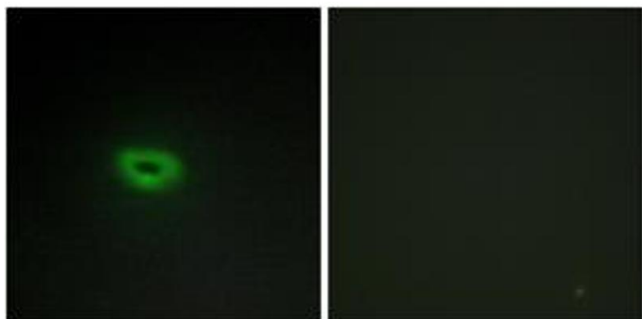
Handling

| | |
|--------------------|---|
| Format: | Liquid |
| Concentration: | 1 mg/mL |
| Buffer: | phosphate buffered saline (without Mg ²⁺ and Ca ²⁺), pH 7.4, 150 mM NaCl, 0.02 % sodium azide and 50 % glycerol. |
| Preservative: | Sodium azide |
| Precaution of Use: | This product contains sodium azide: a POISONOUS AND HAZARDOUS SUBSTANCE which should be handled by trained staff only. |
| Storage: | -20 °C |
| Storage Comment: | Stable at -20°C for at least 1 year. |
| Expiry Date: | 12 months |



Immunohistochemistry

Image 1. Immunohistochemistry analysis of paraffin-embedded human testis tissue, using ECRG4 Antibody. The picture on the right is treated with the synthesized peptide.



Immunofluorescence

Image 2. Immunofluorescence analysis of A549 cells, using ECRG4 Antibody. The picture on the right is treated with the synthesized peptide.