

Datasheet for ABIN1534120
anti-SLK antibody (AA 1151-1200)

3 Images

[Go to Product page](#)

Overview

Quantity:	100 µg
Target:	SLK
Binding Specificity:	AA 1151-1200
Reactivity:	Human, Mouse, Rat
Host:	Rabbit
Clonality:	Polyclonal
Conjugate:	This SLK antibody is un-conjugated
Application:	Western Blotting (WB), ELISA, Immunohistochemistry (IHC), Immunofluorescence (IF)

Product Details

Immunogen:	The antiserum was produced against synthesized peptide derived from human SLK.
Isotype:	IgG
Specificity:	SLK Antibody detects endogenous levels of total SLK protein.
Purification:	The antibody was purified from rabbit antiserum by affinity-chromatography using immunogen.
Purity:	> 95 %

Target Details

Target:	SLK
Alternative Name:	SLK (SLK Products)
Background:	Synonyms: STE20-like kinase, STE20-related serine/threonine-protein kinase, STE20-related

Target Details

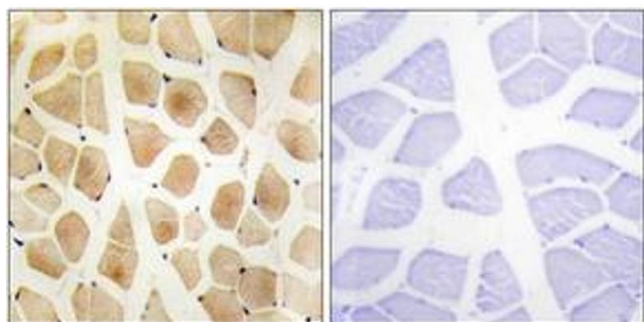
	kinase, hSLK, Serine/threonine-protein kinase 2, CTCL tumor antigen se20-9 NCBI Gene Symbol: SLK
Molecular Weight:	142 kDa
Gene ID:	9748
UniProt:	Q9H2G2

Application Details

Application Notes:	WB: 1:500~1:1000 IHC: 1:50~1:100 IF: 1:100~1:500 ELISA: 1:5000
Comment:	Unigene-Number: Hs.591922 (NCBI Gene Symbol: SLK)
Restrictions:	For Research Use only

Handling

Format:	Liquid
Concentration:	1 mg/mL
Buffer:	phosphate buffered saline (without Mg ²⁺ and Ca ²⁺), pH 7.4, 150 mM NaCl, 0.02 % sodium azide and 50 % glycerol.
Preservative:	Sodium azide
Precaution of Use:	This product contains sodium azide: a POISONOUS AND HAZARDOUS SUBSTANCE which should be handled by trained staff only.
Storage:	-20 °C
Storage Comment:	Stable at -20°C for at least 1 year.
Expiry Date:	12 months



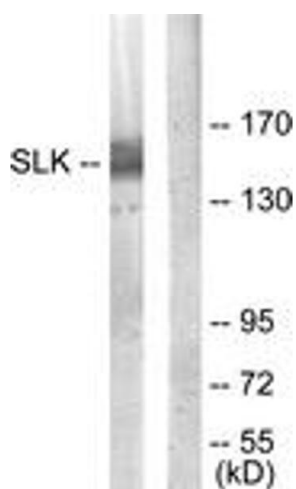
Immunohistochemistry

Image 1. Immunohistochemistry analysis of paraffin-embedded human skeletal muscle tissue, using SLK Antibody. The picture on the right is treated with the synthesized peptide.



Immunofluorescence

Image 2. Immunofluorescence analysis of HepG2 cells, using SLK Antibody. The picture on the right is treated with the synthesized peptide.



Western Blotting

Image 3. Western blot analysis of extracts from COLO205 cells, using SLK Antibody. The lane on the right is treated with the synthesized peptide.