



[Go to Product page](#)

Datasheet for ABIN1534124
anti-Sema4a antibody (AA 501-550)

2 Images

Overview

Quantity:	100 µg
Target:	Sema4a
Binding Specificity:	AA 501-550
Reactivity:	Human, Mouse, Rat
Host:	Rabbit
Clonality:	Polyclonal
Conjugate:	This Sema4a antibody is un-conjugated
Application:	Western Blotting (WB), ELISA, Immunohistochemistry (IHC)

Product Details

Immunogen:	The antiserum was produced against synthesized peptide derived from human SEMA4A.
Isotype:	IgG
Specificity:	SEMA4A Antibody detects endogenous levels of total SEMA4A protein.
Purification:	The antibody was purified from rabbit antiserum by affinity-chromatography using immunogen.
Purity:	> 95 %

Target Details

Target:	Sema4a
Alternative Name:	SEMA4A (Sema4a Products)
Background:	Synonyms: Semaphorin-B, Sema B

Target Details

NCBI Gene Symbol: SEMA4A

Molecular Weight: 83 kDa

Gene ID: 64218

OMIM: 607292

UniProt: [Q9H3S1](#)

Application Details

Application Notes: WB: 1:500~1:1000 IHC: 1:50~1:100 ELISA: 1:20000

Comment: Unigene-Number: Hs.408846 (NCBI Gene Symbol: SEMA4A)

Restrictions: For Research Use only

Handling

Format: Liquid

Concentration: 1 mg/mL

Buffer: phosphate buffered saline (without Mg²⁺ and Ca²⁺), pH 7.4, 150 mM NaCl, 0.02 % sodium azide and 50 % glycerol.

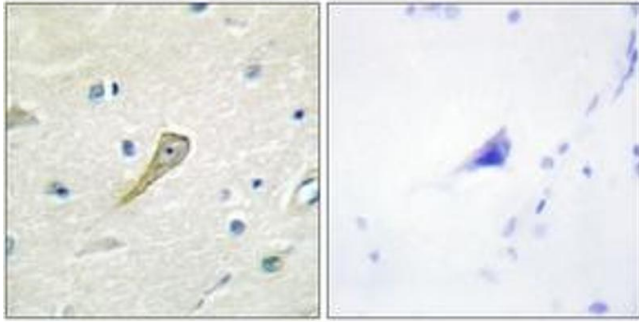
Preservative: Sodium azide

Precaution of Use: This product contains sodium azide: a POISONOUS AND HAZARDOUS SUBSTANCE which should be handled by trained staff only.

Storage: -20 °C

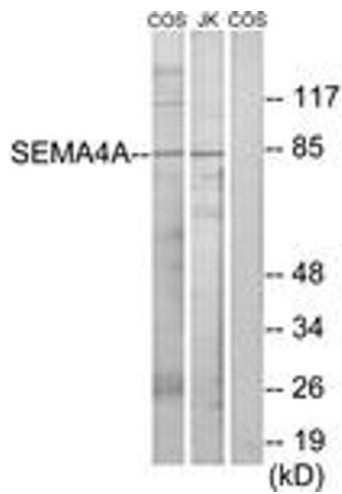
Storage Comment: Stable at -20°C for at least 1 year.

Expiry Date: 12 months



Immunohistochemistry

Image 1. Immunohistochemistry analysis of paraffin-embedded human brain tissue, using SEMA4A Antibody. The picture on the right is treated with the synthesized peptide.



Western Blotting

Image 2. Western blot analysis of extracts from COS7/Jurkat cells, using SEMA4A Antibody. The lane on the right is treated with the synthesized peptide.