

Datasheet for ABIN1534128  
**anti-AZI2 antibody (AA 10-59)**[Go to Product page](#)

## 1 Image

## Overview

Quantity:	100 µg
Target:	AZI2
Binding Specificity:	AA 10-59
Reactivity:	Human, Rat, Mouse
Host:	Rabbit
Clonality:	Polyclonal
Conjugate:	This AZI2 antibody is un-conjugated
Application:	ELISA, Western Blotting (WB)

## Product Details

Immunogen:	The antiserum was produced against synthesized peptide derived from human AZI2.
Isotype:	IgG
Specificity:	AZI2 Antibody detects endogenous levels of total AZI2 protein.
Purification:	The antibody was purified from rabbit antiserum by affinity-chromatography using immunogen.
Purity:	> 95 %

## Target Details

Target:	AZI2
Alternative Name:	AZI2 ( <a href="#">AZI2 Products</a> )
Background:	Synonyms: NF-kappa-B-activating kinase-associated protein 1, Nak-associated protein 1, TILP

## Target Details

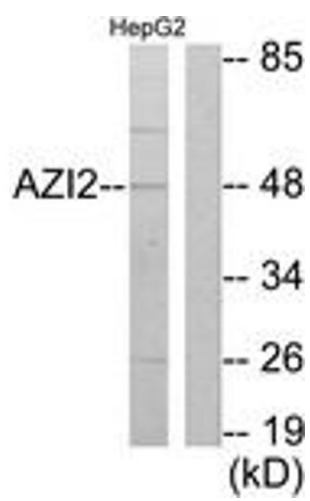
	NCBI Gene Symbol: AZI2
Molecular Weight:	44 kDa
Gene ID:	64343
OMIM:	609916
UniProt:	<a href="#">Q9H6S1</a>

## Application Details

Application Notes:	WB: 1:500~1:1000 ELISA: 1:20000
Comment:	Unigene-Number: Hs.706676, Hs.444724 (NCBI Gene Symbol: AZI2)
Restrictions:	For Research Use only

## Handling

Format:	Liquid
Concentration:	1 mg/mL
Buffer:	phosphate buffered saline (without Mg <sup>2+</sup> and Ca <sup>2+</sup> ), pH 7.4, 150 mM NaCl, 0.02 % sodium azide and 50 % glycerol.
Preservative:	Sodium azide
Precaution of Use:	This product contains sodium azide: a POISONOUS AND HAZARDOUS SUBSTANCE which should be handled by trained staff only.
Storage:	-20 °C
Storage Comment:	Stable at -20°C for at least 1 year.
Expiry Date:	12 months



Western Blotting

**Image 1.** Western blot analysis of extracts from HepG2 cells, using AZI2 Antibody. The lane on the right is treated with the synthesized peptide.