



[Go to Product page](#)

Datasheet for ABIN1534131
anti-IPPK antibody (AA 11-60)

2 Images

Overview

Quantity:	100 µg
Target:	IPPK
Binding Specificity:	AA 11-60
Reactivity:	Human, Mouse, Rat
Host:	Rabbit
Clonality:	Polyclonal
Application:	Immunohistochemistry (IHC), ELISA, Immunofluorescence (IF)

Product Details

Immunogen:	The antiserum was produced against synthesized peptide derived from human IPPK.
Isotype:	IgG
Specificity:	IPPK Antibody detects endogenous levels of total IPPK protein.
Purification:	The antibody was purified from rabbit antiserum by affinity-chromatography using immunogen.
Purity:	> 95 %

Target Details

Target:	IPPK
Alternative Name:	IPPK (IPPK Products)
Background:	Synonyms: Inositol-1,3,4,5,6-pentakisphosphate 2-kinase, Ins(1,3,4,5,6)P5 2-kinase, InsP5 2-kinase, IPK1 homolog

Target Details

NCBI Gene Symbol: IPPK

Molecular Weight: 56 kDa

Gene ID: 64768

UniProt: [Q9H8X2](#)

Application Details

Application Notes: IHC: 1:50~1:100 IF: 1:100~1:500 ELISA: 1:5000

Comment: Unigene-Number: Hs.459896, Hs.713775 (NCBI Gene Symbol: IPPK)

Restrictions: For Research Use only

Handling

Format: Liquid

Concentration: 1 mg/mL

Buffer: phosphate buffered saline (without Mg²⁺ and Ca²⁺), pH 7.4, 150 mM NaCl, 0.02 % sodium azide and 50 % glycerol.

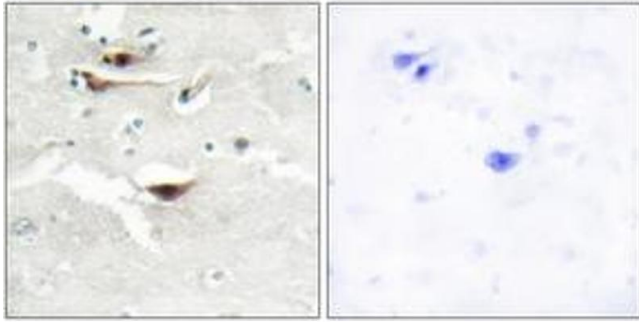
Preservative: Sodium azide

Precaution of Use: This product contains sodium azide: a POISONOUS AND HAZARDOUS SUBSTANCE which should be handled by trained staff only.

Storage: -20 °C

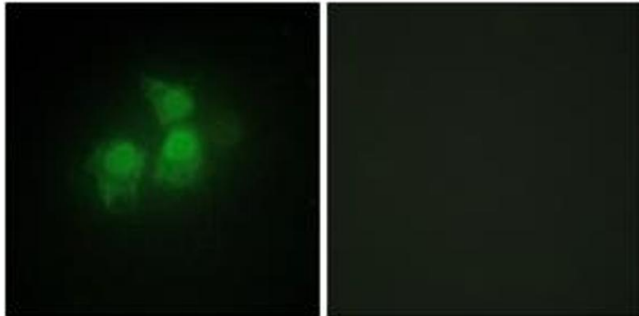
Storage Comment: Stable at -20°C for at least 1 year.

Expiry Date: 12 months



Immunohistochemistry

Image 1. Immunohistochemistry analysis of paraffin-embedded human brain tissue, using IPPK Antibody. The picture on the right is treated with the synthesized peptide.



Immunofluorescence

Image 2. Immunofluorescence analysis of HepG2 cells, using IPPK Antibody. The picture on the right is treated with the synthesized peptide.