

Datasheet for ABIN1534142
anti-THNSL2 antibody (AA 811-860)[Go to Product page](#)

2 Images

Overview

Quantity:	100 µg
Target:	THNSL2
Binding Specificity:	AA 811-860
Reactivity:	Human, Mouse
Host:	Rabbit
Clonality:	Polyclonal
Conjugate:	This THNSL2 antibody is un-conjugated
Application:	ELISA, Immunohistochemistry (IHC), Immunofluorescence (IF)

Product Details

Immunogen:	The antiserum was produced against synthesized peptide derived from human TSH2.
Isotype:	IgG
Specificity:	TSH2 Antibody detects endogenous levels of total TSH2 protein.
Purification:	The antibody was purified from rabbit antiserum by affinity-chromatography using immunogen.
Purity:	> 95 %

Target Details

Target:	THNSL2
Alternative Name:	TSH2 (THNSL2 Products)
Background:	Synonyms: Zinc finger protein 218, Ovarian cancer-related protein 10-2, OVC10-2

Target Details

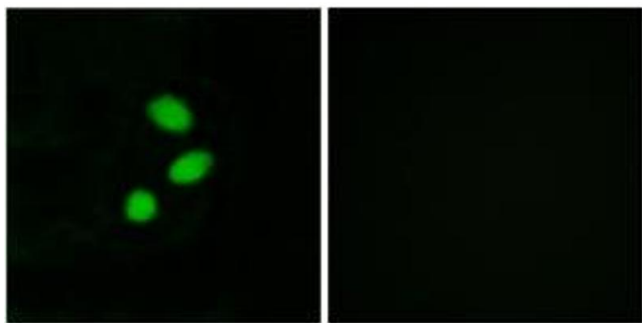
	NCBI Gene Symbol: TSHZ2
Molecular Weight:	115 kDa
Gene ID:	128553
UniProt:	Q9NRE2

Application Details

Application Notes:	IHC: 1:50~1:100 IF: 1:100~1:500 ELISA: 1:20000
Comment:	Unigene-Number: Hs.473117, Hs.649877 (NCBI Gene Symbol: TSHZ2)
Restrictions:	For Research Use only

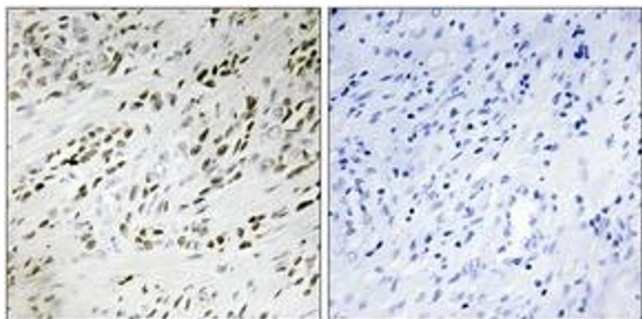
Handling

Format:	Liquid
Concentration:	1 mg/mL
Buffer:	phosphate buffered saline (without Mg ²⁺ and Ca ²⁺), pH 7.4, 150 mM NaCl, 0.02 % sodium azide and 50 % glycerol.
Preservative:	Sodium azide
Precaution of Use:	This product contains sodium azide: a POISONOUS AND HAZARDOUS SUBSTANCE which should be handled by trained staff only.
Storage:	-20 °C
Storage Comment:	Stable at -20°C for at least 1 year.
Expiry Date:	12 months



Immunofluorescence

Image 1. Immunofluorescence analysis of MCF7 cells, using TSH2 Antibody. The picture on the right is treated with the synthesized peptide.



Immunohistochemistry

Image 2. Immunohistochemistry analysis of paraffin-embedded human prostate carcinoma tissue, using TSH2 Antibody. The picture on the right is treated with the synthesized peptide.