

Datasheet for ABIN1534147
anti-CREBZF antibody (AA 221-270)[Go to Product page](#)

2 Images

Overview

| | |
|----------------------|---|
| Quantity: | 100 µg |
| Target: | CREBZF |
| Binding Specificity: | AA 221-270 |
| Reactivity: | Human, Mouse |
| Host: | Rabbit |
| Clonality: | Polyclonal |
| Conjugate: | This CREBZF antibody is un-conjugated |
| Application: | Western Blotting (WB), ELISA, Immunofluorescence (IF) |

Product Details

| | |
|---------------|---|
| Immunogen: | The antiserum was produced against synthesized peptide derived from human CREBZF. |
| Isotype: | IgG |
| Specificity: | CREBZF Antibody detects endogenous levels of total CREBZF protein. |
| Purification: | The antibody was purified from rabbit antiserum by affinity-chromatography using immunogen. |
| Purity: | > 95 % |

Target Details

| | |
|-------------------|---|
| Target: | CREBZF |
| Alternative Name: | CREBZF (CREBZF Products) |
| Background: | Synonyms: Host cell factor-binding transcription factor Zhangfei, HCF-binding transcription |

Target Details

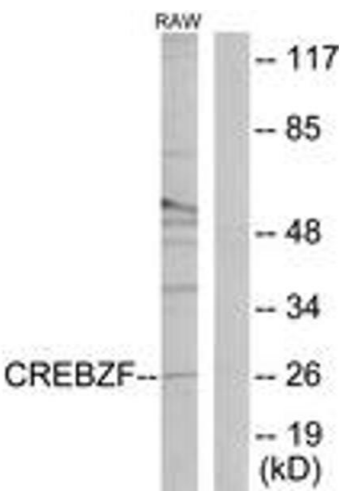
| | |
|-------------------|---|
| | factor Zhangfei NCBI Gene Symbol: CREBZF |
| Molecular Weight: | 28 kDa |
| Gene ID: | 58487 |
| OMIM: | 606444 |
| UniProt: | Q9NS37 |

Application Details

| | |
|--------------------|--|
| Application Notes: | WB: 1:500~1:1000 IF: 1:100~1:500 ELISA: 1:5000 |
| Comment: | Unigene-Number: Hs.535319, Hs.714910, Hs.723938 (NCBI Gene Symbol: CREBZF) |
| Restrictions: | For Research Use only |

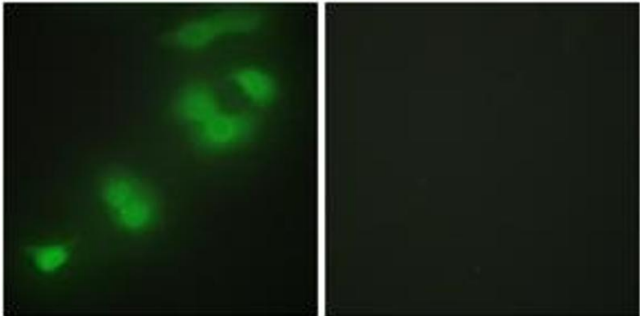
Handling

| | |
|--------------------|---|
| Format: | Liquid |
| Concentration: | 1 mg/mL |
| Buffer: | phosphate buffered saline (without Mg ²⁺ and Ca ²⁺), pH 7.4, 150 mM NaCl, 0.02 % sodium azide and 50 % glycerol. |
| Preservative: | Sodium azide |
| Precaution of Use: | This product contains sodium azide: a POISONOUS AND HAZARDOUS SUBSTANCE which should be handled by trained staff only. |
| Storage: | -20 °C |
| Storage Comment: | Stable at -20°C for at least 1 year. |
| Expiry Date: | 12 months |



Western Blotting

Image 1. Western blot analysis of extracts from RAW264.7 cells, using CREBZF Antibody. The lane on the right is treated with the synthesized peptide.



Immunofluorescence

Image 2. Immunofluorescence analysis of HepG2 cells, using CREBZF Antibody. The picture on the right is treated with the synthesized peptide.