



[Go to Product page](#)

Datasheet for ABIN1534152  
**anti-DUSL2 antibody (AA 421-470)**

2 Images

Overview

Quantity:	100 µL
Target:	DUSL2 (DUS2L)
Binding Specificity:	AA 421-470
Reactivity:	Human, Mouse
Host:	Rabbit
Clonality:	Polyclonal
Conjugate:	This DUSL2 antibody is un-conjugated
Application:	Western Blotting (WB), ELISA, Immunohistochemistry (IHC)

Product Details

Immunogen:	The antiserum was produced against synthesized peptide derived from human DUS2L.
Isotype:	IgG
Specificity:	DUS2L Antibody detects endogenous levels of total DUS2L protein.
Purification:	The antibody was purified from rabbit antiserum by affinity-chromatography using immunogen.
Purity:	> 95 %

Target Details

Target:	DUSL2 (DUS2L)
Alternative Name:	DUS2L ( <a href="#">DUS2L Products</a> )
Background:	Synonyms: tRNA-dihydrouridine synthase 2-like, hDUS2, Up-regulated in lung cancer, URLC8,

## Target Details

---

DUS2L, DUS2  
NCBI Gene Symbol: DUS2L

Molecular Weight: 55 kDa

Gene ID: 54920

OMIM: 609707

UniProt: [Q9NX74](#)

## Application Details

---

Application Notes: WB: 1:500~1:1000 IHC: 1:50~1:100 ELISA: 1:20000

Comment: Unigene-Number: Hs.534460 (NCBI Gene Symbol: DUS2L)

Restrictions: For Research Use only

## Handling

---

Format: Liquid

Concentration: 1 mg/mL

Buffer: phosphate buffered saline (without Mg<sup>2+</sup> and Ca<sup>2+</sup>), pH 7.4, 150 mM NaCl, 0.02 % sodium azide and 50 % glycerol.

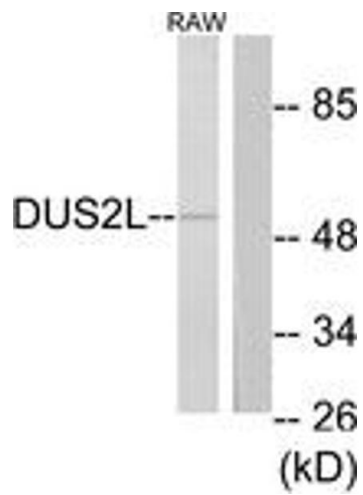
Preservative: Sodium azide

Precaution of Use: This product contains sodium azide: a POISONOUS AND HAZARDOUS SUBSTANCE which should be handled by trained staff only.

Storage: -20 °C

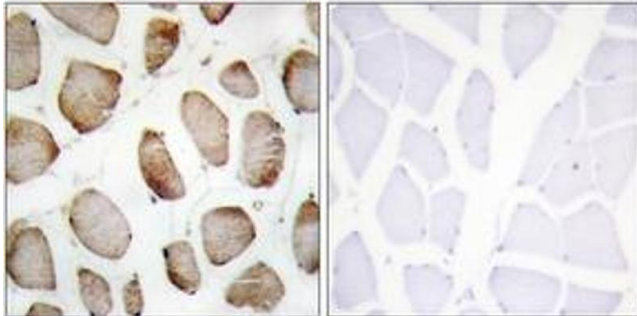
Storage Comment: Stable at -20°C for at least 1 year.

Expiry Date: 12 months



### Western Blotting

**Image 1.** Western blot analysis of extracts from RAW264.7 cells, using DUS2L Antibody. The lane on the right is treated with the synthesized peptide.



### Immunohistochemistry

**Image 2.** Immunohistochemistry analysis of paraffin-embedded human skeletal muscle tissue, using DUS2L Antibody. The picture on the right is treated with the synthesized peptide.