

Datasheet for ABIN1534165  
**anti-MRC2 antibody (AA 121-170)**

## 3 Images

[Go to Product page](#)

## Overview

Quantity:	100 µg
Target:	MRC2
Binding Specificity:	AA 121-170
Reactivity:	Human, Mouse, Rat
Host:	Rabbit
Clonality:	Polyclonal
Conjugate:	This MRC2 antibody is un-conjugated
Application:	Western Blotting (WB), ELISA, Immunohistochemistry (IHC), Immunofluorescence (IF)

## Product Details

Immunogen:	The antiserum was produced against synthesized peptide derived from human MRC2.
Isotype:	IgG
Specificity:	MRC2 Antibody detects endogenous levels of total MRC2 protein.
Purification:	The antibody was purified from rabbit antiserum by affinity-chromatography using immunogen.
Purity:	> 95 %

## Target Details

Target:	MRC2
Alternative Name:	MRC2 ( <a href="#">MRC2 Products</a> )
Background:	Synonyms: C-type mannose receptor 2, Macrophage mannose receptor 2, Urokinase-type

## Target Details

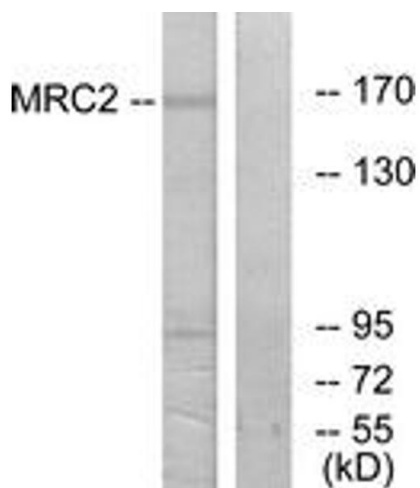
	plasminogen activator receptor-associated protein, Urokinase receptor-associated protein, UPAR-associated protein, Endocytic receptor 180, CD280, ENDO180, KIAA0709, UPARAP NCBI Gene Symbol: MRC2
Molecular Weight:	166 kDa
Gene ID:	9902
OMIM:	612264
UniProt:	<a href="#">Q9UBG0</a>

## Application Details

Application Notes:	WB: 1:500~1:1000 IHC: 1:50~1:100 IF: 1:100~1:500 ELISA: 1:20000
Comment:	Unigene-Number: Hs.7835 (NCBI Gene Symbol: MRC2)
Restrictions:	For Research Use only

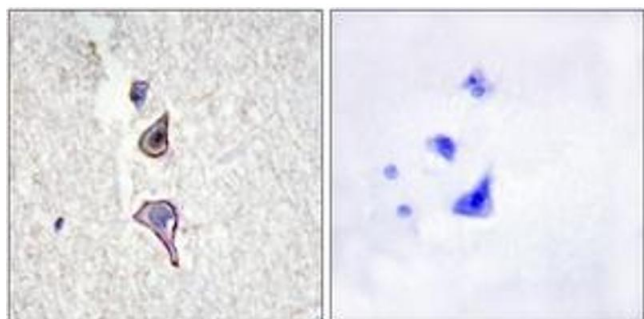
## Handling

Format:	Liquid
Concentration:	1 mg/mL
Buffer:	phosphate buffered saline (without Mg <sup>2+</sup> and Ca <sup>2+</sup> ), pH 7.4, 150 mM NaCl, 0.02 % sodium azide and 50 % glycerol.
Preservative:	Sodium azide
Precaution of Use:	This product contains sodium azide: a POISONOUS AND HAZARDOUS SUBSTANCE which should be handled by trained staff only.
Storage:	-20 °C
Storage Comment:	Stable at -20°C for at least 1 year.
Expiry Date:	12 months



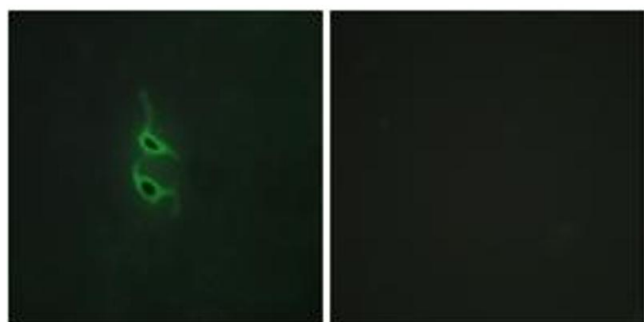
#### Western Blotting

**Image 1.** Western blot analysis of extracts from 293 cells, using MRC2 Antibody. The lane on the right is treated with the synthesized peptide.



#### Immunohistochemistry

**Image 2.** Immunohistochemistry analysis of paraffin-embedded human brain tissue, using MRC2 Antibody. The picture on the right is treated with the synthesized peptide.



#### Immunofluorescence

**Image 3.** Immunofluorescence analysis of HepG2 cells, using MRC2 Antibody. The picture on the right is treated with the synthesized peptide.