

Datasheet for ABIN1534173
anti-ARMCX3 antibody (AA 291-340)[Go to Product page](#)

3 Images

Overview

Quantity:	100 µg
Target:	ARMCX3
Binding Specificity:	AA 291-340
Reactivity:	Human, Mouse, Rat
Host:	Rabbit
Clonality:	Polyclonal
Conjugate:	This ARMCX3 antibody is un-conjugated
Application:	Western Blotting (WB), ELISA, Immunohistochemistry (IHC), Immunofluorescence (IF)

Product Details

Immunogen:	The antiserum was produced against synthesized peptide derived from human ARMX3.
Isotype:	IgG
Specificity:	ARMX3 Antibody detects endogenous levels of total ARMX3 protein.
Purification:	The antibody was purified from rabbit antiserum by affinity-chromatography using immunogen.
Purity:	> 95 %

Target Details

Target:	ARMCX3
Abstract:	ARMCX3 Products
Background:	Synonyms: ALEX3, DKFZp781N1954, KIAA0443, MGC12199, dJ545K15.2, Molecular weight:

Target Details

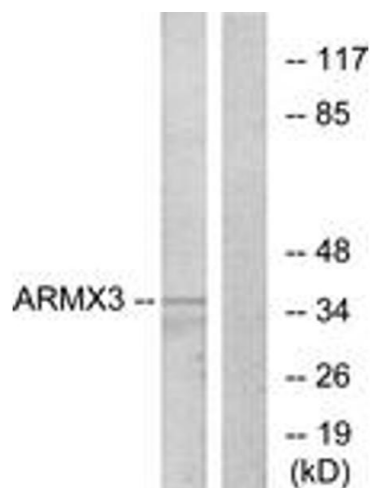
	42500.61
	NCBI Gene Symbol: ARM CX3
Molecular Weight:	42 kDa
Gene ID:	51566
OMIM:	300364
UniProt:	Q9UH62

Application Details

Application Notes:	WB: 1:500~1:1000 IHC: 1:50~1:100 IF: 1:100~1:500 ELISA: 1:1000
Comment:	Unigene-Number: Hs.592225 (NCBI Gene Symbol: ARM CX3)
Restrictions:	For Research Use only

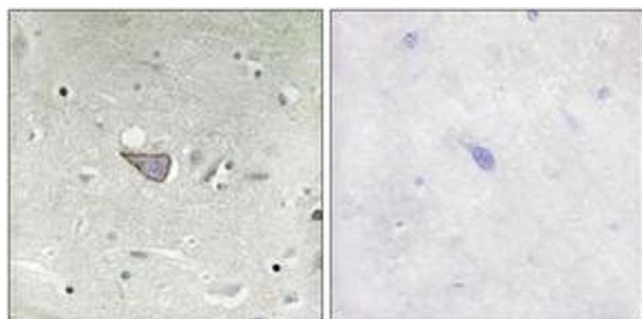
Handling

Format:	Liquid
Concentration:	1 mg/mL
Buffer:	phosphate buffered saline (without Mg ²⁺ and Ca ²⁺), pH 7.4, 150 mM NaCl, 0.02 % sodium azide and 50 % glycerol.
Preservative:	Sodium azide
Precaution of Use:	This product contains sodium azide: a POISONOUS AND HAZARDOUS SUBSTANCE which should be handled by trained staff only.
Storage:	-20 °C
Storage Comment:	Stable at -20°C for at least 1 year.
Expiry Date:	12 months



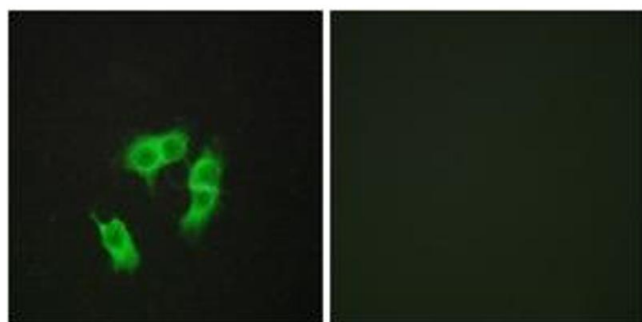
Western Blotting

Image 1. Western blot analysis of extracts from K562 cells, using ARMX3 Antibody. The lane on the right is treated with the synthesized peptide.



Immunohistochemistry

Image 2. Immunohistochemistry analysis of paraffin-embedded human brain tissue, using ARMX3 Antibody. The picture on the right is treated with the synthesized peptide.



Immunofluorescence

Image 3. Immunofluorescence analysis of HepG2 cells, using ARMX3 Antibody. The picture on the right is treated with the synthesized peptide.