



[Go to Product page](#)

Datasheet for ABIN1534174
anti-KLHL3 antibody (AA 10-59)

2 Images

Overview

Quantity:	100 µL
Target:	KLHL3
Binding Specificity:	AA 10-59
Reactivity:	Human
Host:	Rabbit
Clonality:	Polyclonal
Conjugate:	This KLHL3 antibody is un-conjugated
Application:	ELISA, Immunohistochemistry (IHC), Immunofluorescence (IF)

Product Details

Immunogen:	The antiserum was produced against synthesized peptide derived from human KLHL3.
Isotype:	IgG
Specificity:	KLHL3 Antibody detects endogenous levels of total KLHL3 protein.
Purification:	The antibody was purified from rabbit antiserum by affinity-chromatography using immunogen.
Purity:	> 95 %

Target Details

Target:	KLHL3
Alternative Name:	KLHL3 (KLHL3 Products)
Background:	Synonyms: Kelch-like protein 3, KIAA1129

Target Details

NCBI Gene Symbol: KLHL3

Molecular Weight: 64 kDa

Gene ID: 26249

OMIM: 605775

UniProt: [Q9UH77](#), [Q8N4I8](#)

Application Details

Application Notes: IHC: 1:50~1:100 IF: 1:100~1:500 ELISA: 1:20000

Comment: Unigene-Number: Hs.655084, Hs.655084 (NCBI Gene Symbol: KLHL3)

Restrictions: For Research Use only

Handling

Format: Liquid

Concentration: 1 mg/mL

Buffer: phosphate buffered saline (without Mg²⁺ and Ca²⁺), pH 7.4, 150 mM NaCl, 0.02 % sodium azide and 50 % glycerol.

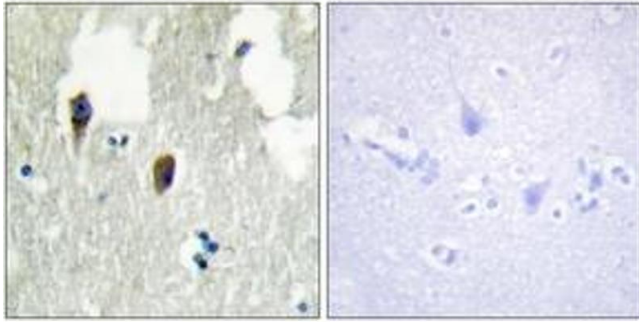
Preservative: Sodium azide

Precaution of Use: This product contains sodium azide: a POISONOUS AND HAZARDOUS SUBSTANCE which should be handled by trained staff only.

Storage: -20 °C

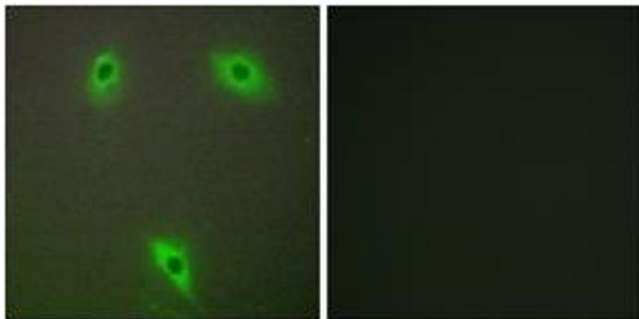
Storage Comment: Stable at -20°C for at least 1 year.

Expiry Date: 12 months



Immunohistochemistry

Image 1. Immunohistochemistry analysis of paraffin-embedded human brain tissue, using KLHL3 Antibody. The picture on the right is treated with the synthesized peptide.



Immunofluorescence

Image 2. Immunofluorescence analysis of A549 cells, using KLHL3 Antibody. The picture on the right is treated with the synthesized peptide.