



[Go to Product page](#)

Datasheet for ABIN1534177
anti-IP6K2 antibody (AA 161-210)

2 Images

Overview

Quantity:	100 µg
Target:	IP6K2
Binding Specificity:	AA 161-210
Reactivity:	Human, Mouse, Rat
Host:	Rabbit
Clonality:	Polyclonal
Conjugate:	This IP6K2 antibody is un-conjugated
Application:	Western Blotting (WB), ELISA, Immunofluorescence (IF)

Product Details

Immunogen:	The antiserum was produced against synthesized peptide derived from human IP6K2.
Isotype:	IgG
Specificity:	IP6K2 Antibody detects endogenous levels of total IP6K2 protein.
Purification:	The antibody was purified from rabbit antiserum by affinity-chromatography using immunogen.
Purity:	> 95 %

Target Details

Target:	IP6K2
Alternative Name:	IP6K2 (IP6K2 Products)
Background:	Synonyms: IP6K2, Inositol hexakisphosphate kinase 2, InsP6 kinase 2, P(i)-uptake stimulator,

Target Details

PiUS
NCBI Gene Symbol: IP6K2

Molecular Weight: 49 kDa

Gene ID: 51447

OMIM: 606992

UniProt: [Q9UHH9](#)

Application Details

Application Notes: WB: 1:500~1:1000 IF: 1:100~1:500 ELISA: 1:40000

Comment: Unigene-Number: Hs.595983 (NCBI Gene Symbol: IP6K2)

Restrictions: For Research Use only

Handling

Format: Liquid

Concentration: 1 mg/mL

Buffer: phosphate buffered saline (without Mg²⁺ and Ca²⁺), pH 7.4, 150 mM NaCl, 0.02 % sodium azide and 50 % glycerol.

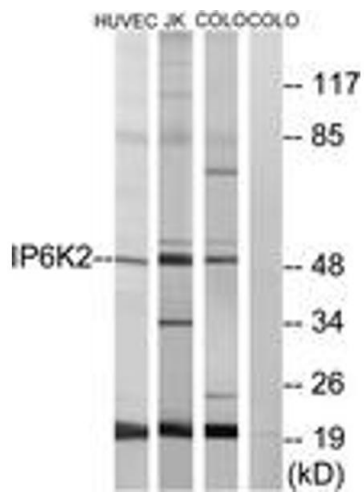
Preservative: Sodium azide

Precaution of Use: This product contains sodium azide: a POISONOUS AND HAZARDOUS SUBSTANCE which should be handled by trained staff only.

Storage: -20 °C

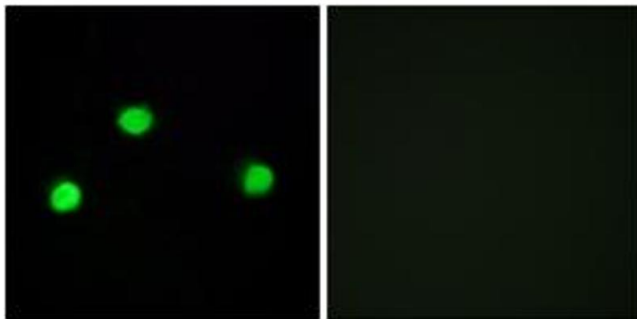
Storage Comment: Stable at -20°C for at least 1 year.

Expiry Date: 12 months



Western Blotting

Image 1. Western blot analysis of extracts from HuvEc/COLO/Jurkat cells, using IP6K2 Antibody. The lane on the right is treated with the synthesized peptide.



Immunofluorescence

Image 2. Immunofluorescence analysis of COS7 cells, using IP6K2 Antibody. The picture on the right is treated with the synthesized peptide.