

Datasheet for ABIN1534178
anti-SHPK antibody (AA 31-80)[Go to Product page](#)

2 Images

Overview

Quantity:	100 µg
Target:	SHPK
Binding Specificity:	AA 31-80
Reactivity:	Human, Mouse, Rat
Host:	Rabbit
Clonality:	Polyclonal
Conjugate:	This SHPK antibody is un-conjugated
Application:	Western Blotting (WB), Immunohistochemistry (IHC), ELISA

Product Details

Immunogen:	The antiserum was produced against synthesized peptide derived from human CARKL.
Isotype:	IgG
Specificity:	CARKL Antibody detects endogenous levels of total CARKL protein.
Purification:	The antibody was purified from rabbit antiserum by affinity-chromatography using immunogen.
Purity:	> 95 %

Target Details

Target:	SHPK
Alternative Name:	CARKL (SHPK Products)
Background:	Synonyms: Sedoheptulokinase, SHK, Carbohydrate kinase-like protein, SHPK, CARKL

Target Details

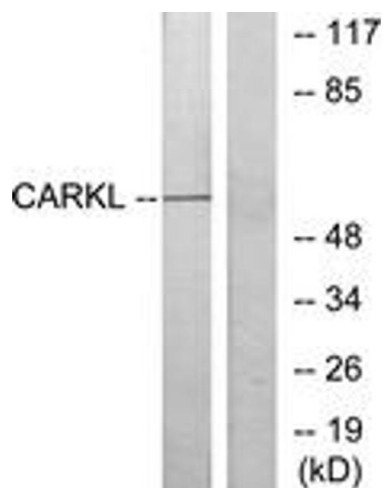
	NCBI Gene Symbol: SHPK
Molecular Weight:	51 kDa
Gene ID:	23729
OMIM:	605060
UniProt:	Q9UHH6
Pathways:	Cellular Response to Molecule of Bacterial Origin

Application Details

Application Notes:	WB: 1:500~1:1000 IHC: 1:50~1:100 ELISA: 1:20000
Comment:	Unigene-Number: Hs.579217 (NCBI Gene Symbol: SHPK)
Restrictions:	For Research Use only

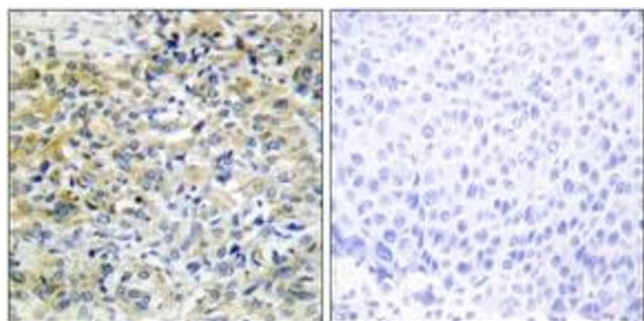
Handling

Format:	Liquid
Concentration:	1 mg/mL
Buffer:	phosphate buffered saline (without Mg ²⁺ and Ca ²⁺), pH 7.4, 150 mM NaCl, 0.02 % sodium azide and 50 % glycerol.
Preservative:	Sodium azide
Precaution of Use:	This product contains sodium azide: a POISONOUS AND HAZARDOUS SUBSTANCE which should be handled by trained staff only.
Storage:	-20 °C
Storage Comment:	Stable at -20°C for at least 1 year.
Expiry Date:	12 months



Western Blotting

Image 1. Western blot analysis of extracts from Jurkat cells, using CARKL Antibody. The lane on the right is treated with the synthesized peptide.



Immunohistochemistry

Image 2. Immunohistochemistry analysis of paraffin-embedded human liver carcinoma tissue, using CARKL Antibody. The picture on the right is treated with the synthesized peptide.