



[Go to Product page](#)

Datasheet for ABIN1534180
anti-MED13 antibody (AA 681-730)

1 Image

Overview

Quantity:	100 µg
Target:	MED13
Binding Specificity:	AA 681-730
Reactivity:	Human
Host:	Rabbit
Clonality:	Polyclonal
Conjugate:	This MED13 antibody is un-conjugated
Application:	ELISA, Immunohistochemistry (IHC)

Product Details

Immunogen:	The antiserum was produced against synthesized peptide derived from human MED13.
Isotype:	IgG
Specificity:	MED13 Antibody detects endogenous levels of total MED13 protein.
Purification:	The antibody was purified from rabbit antiserum by affinity-chromatography using immunogen.
Purity:	> 95 %

Target Details

Target:	MED13
Alternative Name:	MED13 (MED13 Products)
Background:	Synonyms: ARC250, Activator-recruited cofactor 250 kDa component, KIAA0593, T240,

Target Details

THRAP1, TR240, Thyroid hormone receptor associated protein 1, Thyroid hormone receptor-associated protein complex 240 kDa component
NCBI Gene Symbol: MED13

Molecular Weight: 239 kDa

Gene ID: 9969

OMIM: 603808

UniProt: [Q9UHV7](#)

Pathways: [Intracellular Steroid Hormone Receptor Signaling Pathway](#), [Nuclear Hormone Receptor Binding](#), [Regulation of Lipid Metabolism by PPARalpha](#)

Application Details

Application Notes: IHC: 1:50~1:100 ELISA: 1:40000

Comment: Unigene-Number: Hs.282678 (NCBI Gene Symbol: MED13)

Restrictions: For Research Use only

Handling

Format: Liquid

Concentration: 1 mg/mL

Buffer: phosphate buffered saline (without Mg²⁺ and Ca²⁺), pH 7.4, 150 mM NaCl, 0.02 % sodium azide and 50 % glycerol.

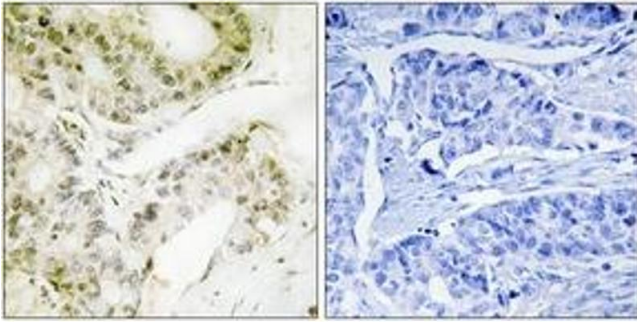
Preservative: Sodium azide

Precaution of Use: This product contains sodium azide: a POISONOUS AND HAZARDOUS SUBSTANCE which should be handled by trained staff only.

Storage: -20 °C

Storage Comment: Stable at -20°C for at least 1 year.

Expiry Date: 12 months



Immunohistochemistry

Image 1. Immunohistochemistry analysis of paraffin-embedded human lung carcinoma, using MED13 Antibody. The picture on the right is treated with the synthesized peptide.