

Datasheet for ABIN1534191
anti-MED23 antibody (AA 1-50)[Go to Product page](#)

2 Images

Overview

Quantity:	100 µg
Target:	MED23
Binding Specificity:	AA 1-50
Reactivity:	Human, Rat, Mouse
Host:	Rabbit
Clonality:	Polyclonal
Conjugate:	This MED23 antibody is un-conjugated
Application:	ELISA, Immunohistochemistry (IHC), Immunofluorescence (IF)

Product Details

Immunogen:	The antiserum was produced against synthesized peptide derived from human MED23.
Isotype:	IgG
Specificity:	MED23 Antibody detects endogenous levels of total MED23 protein.
Purification:	The antibody was purified from rabbit antiserum by affinity-chromatography using immunogen.
Purity:	> 95 %

Target Details

Target:	MED23
Alternative Name:	MED23 (MED23 Products)
Background:	Synonyms: 130 kDa transcriptional co-activator, MED23

Target Details

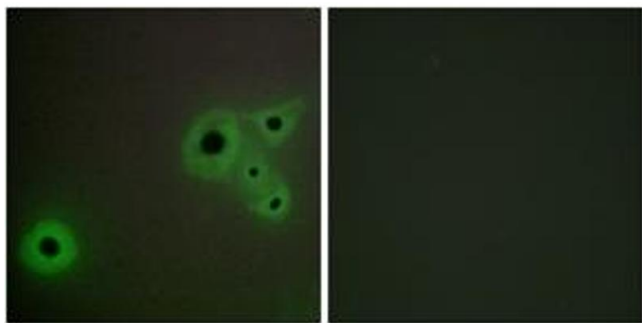
	NCBI Gene Symbol: MED23
Molecular Weight:	156 kDa
Gene ID:	9439
OMIM:	605042
UniProt:	Q9ULK4
Pathways:	Regulation of Lipid Metabolism by PPARalpha

Application Details

Application Notes:	IHC: 1:50~1:100 IF: 1:100~1:500 ELISA: 1:1000
Comment:	Unigene-Number: Hs.29679 (NCBI Gene Symbol: MED23)
Restrictions:	For Research Use only

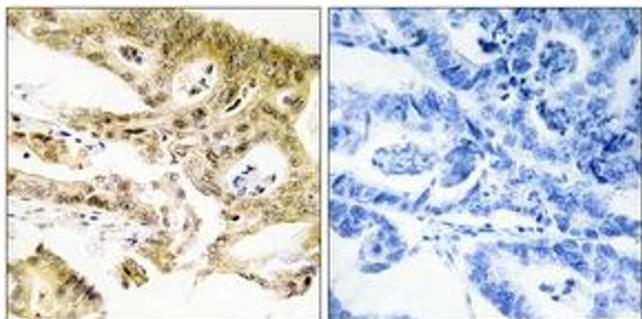
Handling

Format:	Liquid
Concentration:	1 mg/mL
Buffer:	phosphate buffered saline (without Mg ²⁺ and Ca ²⁺), pH 7.4, 150 mM NaCl, 0.02 % sodium azide and 50 % glycerol.
Preservative:	Sodium azide
Precaution of Use:	This product contains sodium azide: a POISONOUS AND HAZARDOUS SUBSTANCE which should be handled by trained staff only.
Storage:	-20 °C
Storage Comment:	Stable at -20°C for at least 1 year.
Expiry Date:	12 months



Immunofluorescence

Image 1. Immunofluorescence analysis of A549 cells, using MED23 Antibody. The picture on the right is treated with the synthesized peptide.



Immunohistochemistry

Image 2. Immunohistochemistry analysis of paraffin-embedded human colon carcinoma tissue, using MED23 Antibody. The picture on the right is treated with the synthesized peptide.