

Datasheet for ABIN1534195
anti-STS antibody (AA 10-59)[Go to Product page](#)

2 Images

Overview

Quantity:	100 µg
Target:	STS
Binding Specificity:	AA 10-59
Reactivity:	Human, Mouse, Rat
Host:	Rabbit
Clonality:	Polyclonal
Conjugate:	This STS antibody is un-conjugated
Application:	Western Blotting (WB), Immunohistochemistry (IHC), ELISA

Product Details

Immunogen:	The antiserum was produced against synthesized peptide derived from human ASC.
Isotype:	IgG
Specificity:	ASC Antibody detects endogenous levels of total ASC protein.
Purification:	The antibody was purified from rabbit antiserum by affinity-chromatography using immunogen.
Purity:	> 95 %

Target Details

Target:	STS
Alternative Name:	ASC (STS Products)
Background:	Synonyms: ASC, ASC, apoptosis-associated speck-like protein containing a CARD, CARD5,

Target Details

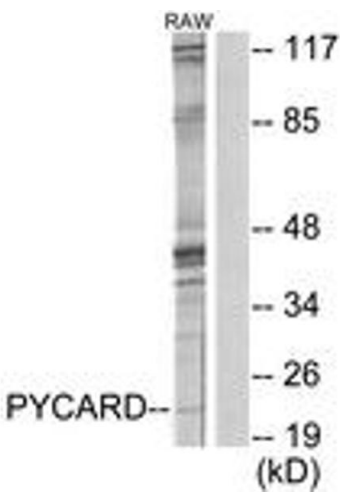
	caspase recruitment domain protein 5, TMS1, target of methylation-induced silencing 1, NCBI Gene Symbol: PYCARD
Molecular Weight:	21 kDa
Gene ID:	29108
OMIM:	606838
UniProt:	Q9ULZ3
Pathways:	Steroid Hormone Biosynthesis , Activation of Innate immune Response , Cellular Response to Molecule of Bacterial Origin , Positive Regulation of Endopeptidase Activity , Activated T Cell Proliferation

Application Details

Application Notes:	WB: 1:500~1:1000 IHC: 1:50~1:100 ELISA: 1:40000
Comment:	Unigene-Number: Hs.499094 (NCBI Gene Symbol: PYCARD)
Restrictions:	For Research Use only

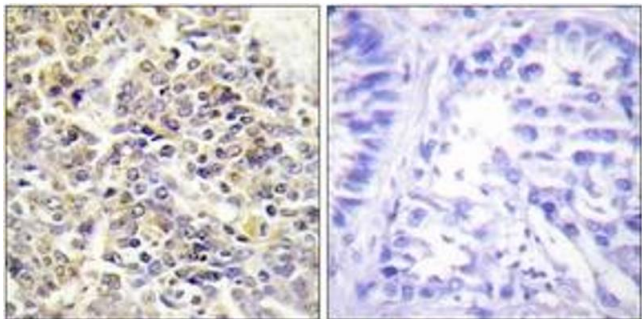
Handling

Format:	Liquid
Concentration:	1 mg/mL
Buffer:	phosphate buffered saline (without Mg ²⁺ and Ca ²⁺), pH 7.4, 150 mM NaCl, 0.02 % sodium azide and 50 % glycerol.
Preservative:	Sodium azide
Precaution of Use:	This product contains sodium azide: a POISONOUS AND HAZARDOUS SUBSTANCE which should be handled by trained staff only.
Storage:	-20 °C
Storage Comment:	Stable at -20°C for at least 1 year.
Expiry Date:	12 months



Western Blotting

Image 1. Western blot analysis of extracts from RAW264.7 cells, using ASC Antibody. The lane on the right is treated with the synthesized peptide.



Immunohistochemistry

Image 2. Immunohistochemistry analysis of paraffin-embedded human lung carcinoma tissue, using ASC Antibody. The picture on the right is treated with the synthesized peptide.