

Datasheet for ABIN1534197  
**anti-JIP3 antibody (AA 621-670)**

## 2 Images

[Go to Product page](#)

## Overview

Quantity:	100 µg
Target:	JIP3 (MAPK8IP3)
Binding Specificity:	AA 621-670
Reactivity:	Human, Mouse
Host:	Rabbit
Clonality:	Polyclonal
Conjugate:	This JIP3 antibody is un-conjugated
Application:	ELISA, Western Blotting (WB), Immunofluorescence (IF)

## Product Details

Immunogen:	The antiserum was produced against synthesized peptide derived from human JIP3.
Isotype:	IgG
Specificity:	JIP3 Antibody detects endogenous levels of total JIP3 protein.
Purification:	The antibody was purified from rabbit antiserum by affinity-chromatography using immunogen.
Purity:	> 95 %

## Target Details

Target:	JIP3 (MAPK8IP3)
Alternative Name:	JIP3 ( <a href="#">MAPK8IP3 Products</a> )
Background:	Synonyms: C-jun-amino-terminal kinase interacting protein 3, JIP-3, JIP3, JNK MAP kinase

## Target Details

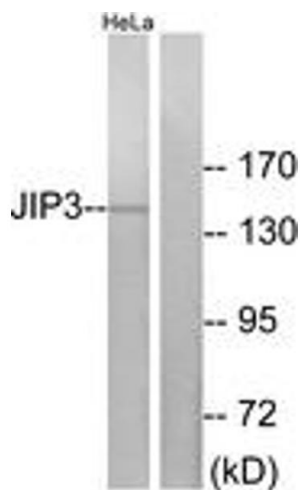
	scaffold protein 3, JNK-interacting protein 3, JNK/SAPK-associated protein 1, JSAP1, KIAA1066, MAPK8IP3, Mitogen- activated protein kinase 8-interacting protein 3, SYD2, Sunday NCBI Gene Symbol: MAPK8IP3
Molecular Weight:	147 kDa
Gene ID:	23162
OMIM:	605431
UniProt:	<a href="#">Q9UPT6</a>

## Application Details

Application Notes:	WB: 1:500~1:1000 IF: 1:100~1:500 ELISA: 1:20000
Comment:	Unigene-Number: Hs.207763 (NCBI Gene Symbol: MAPK8IP3)
Restrictions:	For Research Use only

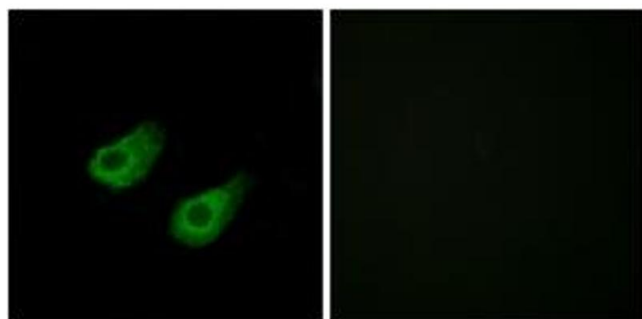
## Handling

Format:	Liquid
Concentration:	1 mg/mL
Buffer:	phosphate buffered saline (without Mg <sup>2+</sup> and Ca <sup>2+</sup> ), pH 7.4, 150 mM NaCl, 0.02 % sodium azide and 50 % glycerol.
Preservative:	Sodium azide
Precaution of Use:	This product contains sodium azide: a POISONOUS AND HAZARDOUS SUBSTANCE which should be handled by trained staff only.
Storage:	-20 °C
Storage Comment:	Stable at -20°C for at least 1 year.
Expiry Date:	12 months



#### Western Blotting

**Image 1.** Western blot analysis of extracts from HeLa cells, using JIP3 Antibody. The lane on the right is treated with the synthesized peptide.



#### Immunofluorescence

**Image 2.** Immunofluorescence analysis of HeLa cells, using JIP3 Antibody. The picture on the right is treated with the synthesized peptide.