

Datasheet for ABIN1534199
anti-MOK antibody (AA 261-310)[Go to Product page](#)

2 Images

Overview

Quantity:	100 µg
Target:	MOK
Binding Specificity:	AA 261-310
Reactivity:	Human
Host:	Rabbit
Clonality:	Polyclonal
Conjugate:	This MOK antibody is un-conjugated
Application:	Western Blotting (WB), Immunohistochemistry (IHC), ELISA

Product Details

Immunogen:	The antiserum was produced against synthesized peptide derived from human MOK.
Isotype:	IgG
Specificity:	MOK Antibody detects endogenous levels of total MOK protein.
Purification:	The antibody was purified from rabbit antiserum by affinity-chromatography using immunogen.
Purity:	> 95 %

Target Details

Target:	MOK
Alternative Name:	MOK (MOK Products)
Background:	Synonyms: MAPK/MAK/MRK overlapping kinase, MOK protein kinase, Renal tumor antigen 1,

Target Details

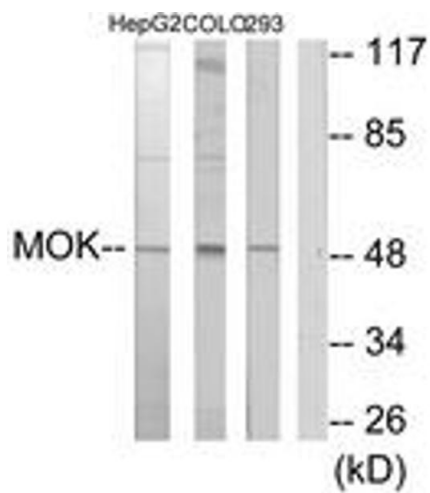
	RAGE-1 , RAGE , MOK, RAGE1 NCBI Gene Symbol: RAGE
Molecular Weight:	48 kDa
Gene ID:	5891
OMIM:	605762
UniProt:	Q9UQ07
Pathways:	S100 Proteins

Application Details

Application Notes:	WB: 1:500~1:1000 IHC: 1:50~1:100 ELISA: 1:1000
Comment:	Unigene-Number: Hs.104119 (NCBI Gene Symbol: RAGE)
Restrictions:	For Research Use only

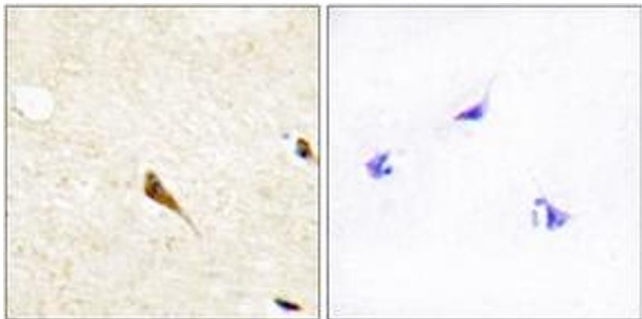
Handling

Format:	Liquid
Concentration:	1 mg/mL
Buffer:	phosphate buffered saline (without Mg ²⁺ and Ca ²⁺), pH 7.4, 150 mM NaCl, 0.02 % sodium azide and 50 % glycerol.
Preservative:	Sodium azide
Precaution of Use:	This product contains sodium azide: a POISONOUS AND HAZARDOUS SUBSTANCE which should be handled by trained staff only.
Storage:	-20 °C
Storage Comment:	Stable at -20°C for at least 1 year.
Expiry Date:	12 months



Western Blotting

Image 1. Western blot analysis of extracts from HepG2/COL0205/293 cells, using MOK Antibody. The lane on the right is treated with the synthesized peptide.



Immunohistochemistry

Image 2. Immunohistochemistry analysis of paraffin-embedded human brain tissue, using MOK Antibody. The picture on the right is treated with the synthesized peptide.