



[Go to Product page](#)

Datasheet for ABIN1534201
anti-DLEC1 antibody (AA 1-50)

2 Images

Overview

Quantity:	100 µg
Target:	DLEC1
Binding Specificity:	AA 1-50
Reactivity:	Human
Host:	Rabbit
Clonality:	Polyclonal
Conjugate:	This DLEC1 antibody is un-conjugated
Application:	ELISA, Immunohistochemistry (IHC), Immunofluorescence (IF)

Product Details

Immunogen:	The antiserum was produced against synthesized peptide derived from human DLEC1.
Isotype:	IgG
Specificity:	DLEC1 Antibody detects endogenous levels of total DLEC1 protein.
Purification:	The antibody was purified from rabbit antiserum by affinity-chromatography using immunogen.
Purity:	> 95 %

Target Details

Target:	DLEC1
Alternative Name:	DLEC1 (DLEC1 Products)
Background:	Synonyms: Deleted in lung and esophageal cancer protein 1, Deleted in lung cancer protein 1,

Target Details

DLC-1, DLC1
NCBI Gene Symbol: DLEC1

Molecular Weight: 195 kDa

Gene ID: 9940

OMIM: 133239

UniProt: [Q9Y238](#)

Application Details

Application Notes: IHC: 1:50~1:100 IF: 1:100~1:500 ELISA: 1:1000

Comment: Unigene-Number: Hs.714499 (NCBI Gene Symbol: DLEC1)

Restrictions: For Research Use only

Handling

Format: Liquid

Concentration: 1 mg/mL

Buffer: phosphate buffered saline (without Mg²⁺ and Ca²⁺), pH 7.4, 150 mM NaCl, 0.02 % sodium azide and 50 % glycerol.

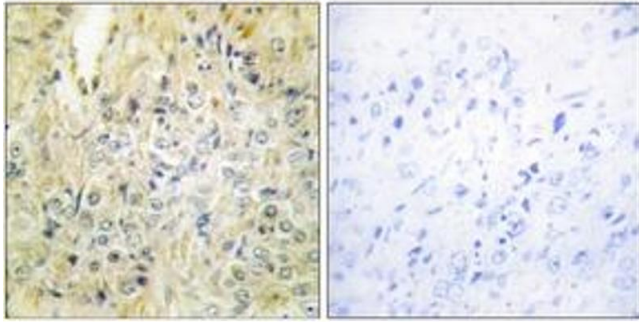
Preservative: Sodium azide

Precaution of Use: This product contains sodium azide: a POISONOUS AND HAZARDOUS SUBSTANCE which should be handled by trained staff only.

Storage: -20 °C

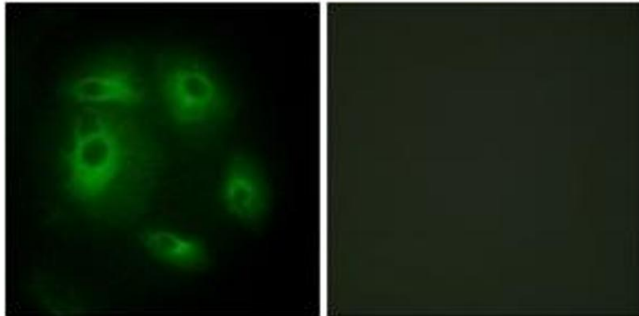
Storage Comment: Stable at -20°C for at least 1 year.

Expiry Date: 12 months



Immunohistochemistry

Image 1. Immunohistochemistry analysis of paraffin-embedded human prostate carcinoma tissue, using DLEC1 Antibody. The picture on the right is treated with the synthesized peptide.



Immunofluorescence

Image 2. Immunofluorescence analysis of HeLa cells, using DLEC1 Antibody. The picture on the right is treated with the synthesized peptide.