

Datasheet for ABIN1534204  
**anti-ERGIC3 antibody (AA 321-370)**[Go to Product page](#)

## 2 Images

## Overview

Quantity:	100 µg
Target:	ERGIC3
Binding Specificity:	AA 321-370
Reactivity:	Human, Mouse
Host:	Rabbit
Clonality:	Polyclonal
Conjugate:	This ERGIC3 antibody is un-conjugated
Application:	ELISA, Western Blotting (WB), Immunofluorescence (IF)

## Product Details

Immunogen:	The antiserum was produced against synthesized peptide derived from human ERG13.
Isotype:	IgG
Specificity:	ERG13 Antibody detects endogenous levels of total ERG13 protein.
Purification:	The antibody was purified from rabbit antiserum by affinity-chromatography using immunogen.
Purity:	> 95 %

## Target Details

Target:	ERGIC3
Alternative Name:	ERG13 ( <a href="#">ERGIC3 Products</a> )
Background:	Synonyms: ERGIC and golgi 3, ERGIC3, Erv46, NY-BR-84, Serologically defined breast cancer

## Target Details

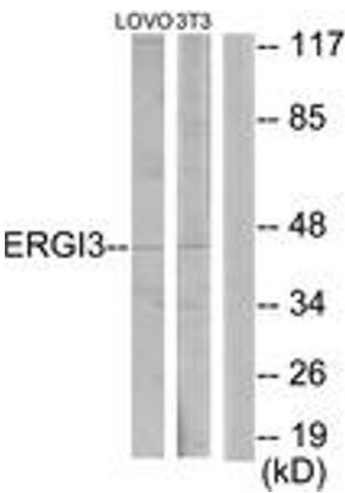
	antigen NY-BR-84 NCBI Gene Symbol: ERGIC3
Molecular Weight:	43 kDa
Gene ID:	51614
UniProt:	<a href="#">Q9Y282</a>

## Application Details

Application Notes:	WB: 1:500~1:1000 IF: 1:100~1:500 ELISA: 1:20000
Comment:	Unigene-Number: Hs.472558 (NCBI Gene Symbol: ERGIC3)
Restrictions:	For Research Use only

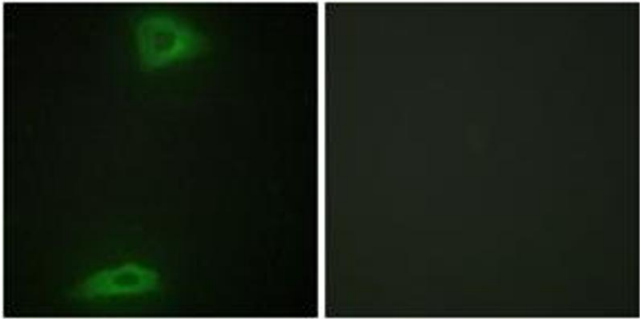
## Handling

Format:	Liquid
Concentration:	1 mg/mL
Buffer:	phosphate buffered saline (without Mg <sup>2+</sup> and Ca <sup>2+</sup> ), pH 7.4, 150 mM NaCl, 0.02 % sodium azide and 50 % glycerol.
Preservative:	Sodium azide
Precaution of Use:	This product contains sodium azide: a POISONOUS AND HAZARDOUS SUBSTANCE which should be handled by trained staff only.
Storage:	-20 °C
Storage Comment:	Stable at -20°C for at least 1 year.
Expiry Date:	12 months



#### Western Blotting

**Image 1.** Western blot analysis of extracts from LOVO/NIH-3T3 cells, using ERG13 Antibody. The lane on the right is treated with the synthesized peptide.



#### Immunofluorescence

**Image 2.** Immunofluorescence analysis of HepG2 cells, using ERG13 Antibody. The picture on the right is treated with the synthesized peptide.