

Datasheet for ABIN1534211
anti-MOBL3 antibody (AA 1-50)



[Go to Product page](#)

1 Image

Overview

Quantity:	100 µL
Target:	MOBL3
Binding Specificity:	AA 1-50
Reactivity:	Human, Mouse, Rat
Host:	Rabbit
Clonality:	Polyclonal
Conjugate:	This MOBL3 antibody is un-conjugated
Application:	ELISA, Western Blotting (WB)

Product Details

Immunogen:	The antiserum was produced against synthesized peptide derived from human MOBL3.
Isotype:	IgG
Specificity:	MOBL3 Antibody detects endogenous levels of total MOBL3 protein.
Purification:	The antibody was purified from rabbit antiserum by affinity-chromatography using immunogen.
Purity:	> 95 %

Target Details

Target:	MOBL3
Alternative Name:	MOBL3
Background:	Synonyms: MOB1, MOB3, Mob1 homolog 3, Mob3, Mps one binder kinase activator-like 3, class

Target Details

II mMOB1, preimplantation 3
NCBI Gene Symbol: MOBKL3

Molecular Weight: 26 kDa

Gene ID: 25843

OMIM: 609361

UniProt: [Q9Y3A3](#)

Application Details

Application Notes: WB: 1:500~1:1000 ELISA: 1:20000

Comment: Unigene-Number: Hs.645458 (NCBI Gene Symbol: MOBKL3)

Restrictions: For Research Use only

Handling

Format: Liquid

Concentration: 1 mg/mL

Buffer: phosphate buffered saline (without Mg²⁺ and Ca²⁺), pH 7.4, 150 mM NaCl, 0.02 % sodium azide and 50 % glycerol.

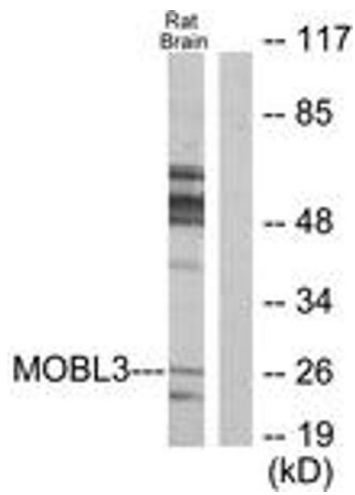
Preservative: Sodium azide

Precaution of Use: This product contains sodium azide: a POISONOUS AND HAZARDOUS SUBSTANCE which should be handled by trained staff only.

Storage: -20 °C

Storage Comment: Stable at -20°C for at least 1 year.

Expiry Date: 12 months



Western Blotting

Image 1. Western blot analysis of extracts from rat brain cells, using MOBL3 Antibody. The lane on the right is treated with the synthesized peptide.