

Datasheet for ABIN1534220
anti-CDC42BPB antibody (AA 1641-1690)[Go to Product page](#)

2 Images

Overview

Quantity:	100 µg
Target:	CDC42BPB
Binding Specificity:	AA 1641-1690
Reactivity:	Human, Rat, Mouse
Host:	Rabbit
Clonality:	Polyclonal
Conjugate:	This CDC42BPB antibody is un-conjugated
Application:	ELISA, Western Blotting (WB), Immunohistochemistry (IHC)

Product Details

Immunogen:	The antiserum was produced against synthesized peptide derived from human MRCKB.
Isotype:	IgG
Specificity:	MRCKB Antibody detects endogenous levels of total MRCKB protein.
Purification:	The antibody was purified from rabbit antiserum by affinity-chromatography using immunogen.
Purity:	> 95 %

Target Details

Target:	CDC42BPB
Alternative Name:	MRCKB (CDC42BPB Products)
Background:	Synonyms: CDC42-binding protein kinase beta, CDC42BPB, MRCK-beta,

Target Details

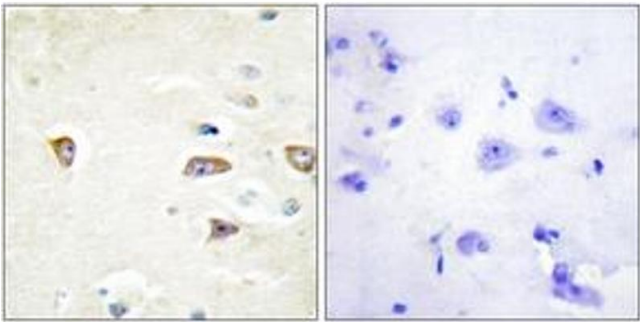
	NCBI Gene Symbol: CDC42BPB
Molecular Weight:	194 kDa
Gene ID:	9578
UniProt:	Q9Y5S2

Application Details

Application Notes:	WB: 1:500~1:1000 IHC: 1:50~1:100 ELISA: 1:40000
Comment:	Unigene-Number: Hs.534494, Hs.654634 (NCBI Gene Symbol: CDC42BPB)
Restrictions:	For Research Use only

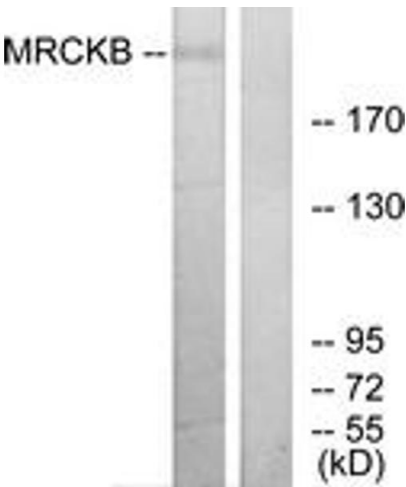
Handling

Format:	Liquid
Concentration:	1 mg/mL
Buffer:	phosphate buffered saline (without Mg ²⁺ and Ca ²⁺), pH 7.4, 150 mM NaCl, 0.02 % sodium azide and 50 % glycerol.
Preservative:	Sodium azide
Precaution of Use:	This product contains sodium azide: a POISONOUS AND HAZARDOUS SUBSTANCE which should be handled by trained staff only.
Storage:	-20 °C
Storage Comment:	Stable at -20°C for at least 1 year.
Expiry Date:	12 months



Immunohistochemistry

Image 1. Immunohistochemistry analysis of paraffin-embedded human brain tissue, using MRCKB Antibody. The picture on the right is treated with the synthesized peptide.



Western Blotting

Image 2. Western blot analysis of extracts from COLO cells, using MRCKB Antibody. The lane on the right is treated with the synthesized peptide.