

Datasheet for ABIN1534225
anti-EID1 antibody (AA 71-120)[Go to Product page](#)

2 Images

Overview

Quantity:	100 µg
Target:	EID1
Binding Specificity:	AA 71-120
Reactivity:	Human
Host:	Rabbit
Clonality:	Polyclonal
Conjugate:	This EID1 antibody is un-conjugated
Application:	ELISA, Western Blotting (WB), Immunofluorescence (IF)

Product Details

Immunogen:	The antiserum was produced against synthesized peptide derived from human EID1.
Isotype:	IgG
Specificity:	EID1 Antibody detects endogenous levels of total EID1 protein.
Purification:	The antibody was purified from rabbit antiserum by affinity-chromatography using immunogen.
Purity:	> 95 %

Target Details

Target:	EID1
Alternative Name:	EID1 (EID1 Products)
Background:	Synonyms: 21 kDa pRb-associated protein, C15orf3, CREBBP/EP300 inhibitory protein 1, CRI1,

Target Details

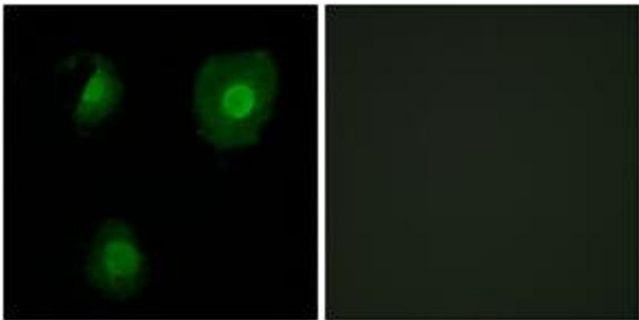
	e1A-like inhibitor of differentiation 1, EID-1, EP300-interacting inhibitor of differentiation 1, PNAS-22, PTD014, RBP21 NCBI Gene Symbol: EID1
Molecular Weight:	20 kDa
Gene ID:	23741
OMIM:	605894
UniProt:	Q9Y6B2

Application Details

Application Notes:	WB: 1:500~1:1000 IF: 1:100~1:500 ELISA: 1:10000
Comment:	Unigene-Number: Hs.255973 (NCBI Gene Symbol: EID1)
Restrictions:	For Research Use only

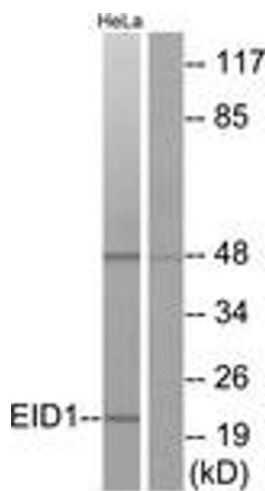
Handling

Format:	Liquid
Concentration:	1 mg/mL
Buffer:	phosphate buffered saline (without Mg ²⁺ and Ca ²⁺), pH 7.4, 150 mM NaCl, 0.02 % sodium azide and 50 % glycerol.
Preservative:	Sodium azide
Precaution of Use:	This product contains sodium azide: a POISONOUS AND HAZARDOUS SUBSTANCE which should be handled by trained staff only.
Storage:	-20 °C
Storage Comment:	Stable at -20°C for at least 1 year.
Expiry Date:	12 months



Immunofluorescence

Image 1. Immunofluorescence analysis of A549 cells, using EID1 Antibody. The picture on the right is treated with the synthesized peptide.



Western Blotting

Image 2. Western blot analysis of extracts from HeLa cells, using EID1 Antibody. The lane on the right is treated with the synthesized peptide.