

Datasheet for ABIN1534243

anti-Serotonin Receptor 2B antibody (AA 261-310)**3** Images[Go to Product page](#)

Overview

Quantity:	100 µg
Target:	Serotonin Receptor 2B (HTR2B)
Binding Specificity:	AA 261-310
Reactivity:	Human
Host:	Rabbit
Clonality:	Polyclonal
Conjugate:	This Serotonin Receptor 2B antibody is un-conjugated
Application:	Western Blotting (WB), Immunohistochemistry (IHC), ELISA, Immunofluorescence (IF)

Product Details

Immunogen:	The antiserum was produced against synthesized peptide derived from human 5-HT-2B.
Isotype:	IgG
Specificity:	5-HT-2B Antibody detects endogenous levels of total 5-HT-2B protein.
Purification:	The antibody was purified from rabbit antiserum by affinity-chromatography using immunogen.
Purity:	> 95 %

Target Details

Target:	Serotonin Receptor 2B (HTR2B)
Alternative Name:	5-HT-2B (HTR2B Products)
Background:	Synonyms: 5-hydroxytryptamine receptor 2B, 5-HT-2B, Serotonin receptor 2B, HTR2B

Target Details

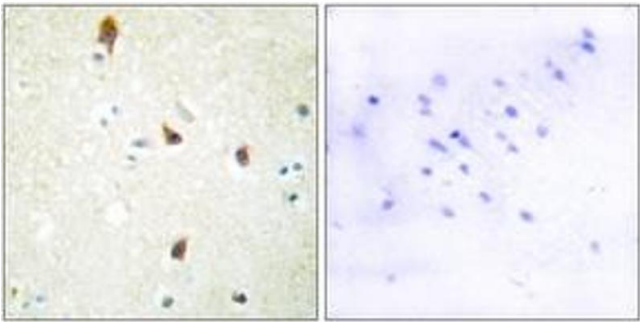
	NCBI Gene Symbol: HTR2B
Molecular Weight:	54 kDa
Gene ID:	3357
OMIM:	601122
UniProt:	P41595
Pathways:	JAK-STAT Signaling , Inositol Metabolic Process , Regulation of G-Protein Coupled Receptor Protein Signaling , Regulation of Carbohydrate Metabolic Process

Application Details

Application Notes:	WB: 1:500~1:1000 IHC: 1:50~1:100 IF: 1:100~1:500 ELISA: 1:1000
Comment:	Unigene-Number: Hs.421649 (NCBI Gene Symbol: HTR2B)
Restrictions:	For Research Use only

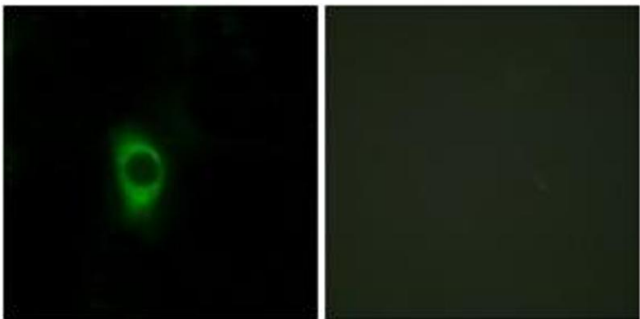
Handling

Format:	Liquid
Concentration:	1 mg/mL
Buffer:	phosphate buffered saline (without Mg ²⁺ and Ca ²⁺), pH 7.4, 150 mM NaCl, 0.02 % sodium azide and 50 % glycerol.
Preservative:	Sodium azide
Precaution of Use:	This product contains sodium azide: a POISONOUS AND HAZARDOUS SUBSTANCE which should be handled by trained staff only.
Storage:	-20 °C
Storage Comment:	Stable at -20°C for at least 1 year.
Expiry Date:	12 months



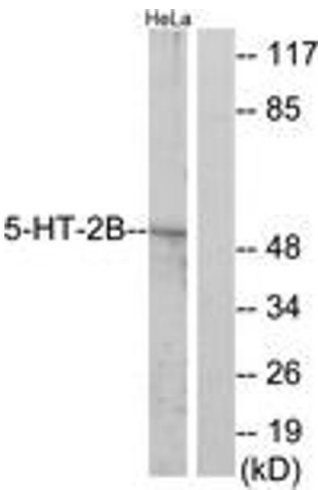
Immunohistochemistry

Image 1. Immunohistochemistry analysis of paraffin-embedded human brain tissue, using 5-HT-2B Antibody. The picture on the right is treated with the synthesized peptide.



Immunofluorescence

Image 2. Immunofluorescence analysis of HeLa cells, using 5-HT-2B Antibody. The picture on the right is treated with the synthesized peptide.



Western Blotting

Image 3. Western blot analysis of extracts from HeLa cells, using 5-HT-2B Antibody. The lane on the right is treated with the synthesized peptide.