

Datasheet for ABIN1534266

**anti-Apoptosis Inhibitor 5 antibody (AA 421-470)**[Go to Product page](#)**2** Images

## Overview

Quantity:	100 µg
Target:	Apoptosis Inhibitor 5 (API5)
Binding Specificity:	AA 421-470
Reactivity:	Human, Mouse
Host:	Rabbit
Clonality:	Polyclonal
Conjugate:	This Apoptosis Inhibitor 5 antibody is un-conjugated
Application:	Western Blotting (WB), ELISA, Immunohistochemistry (IHC)

## Product Details

Immunogen:	The antiserum was produced against synthesized peptide derived from human API-5.
Isotype:	IgG
Specificity:	API-5 Antibody detects endogenous levels of total API-5 protein.
Purification:	The antibody was purified from rabbit antiserum by affinity-chromatography using immunogen.
Purity:	> 95 %

## Target Details

Target:	Apoptosis Inhibitor 5 (API5)
Alternative Name:	API-5 ( <a href="#">API5 Products</a> )
Background:	Synonyms: AAC-11, API-5, API5-like 1, API5L1, FIF, XAGL protein, apoptosis inhibitor 5,

## Target Details

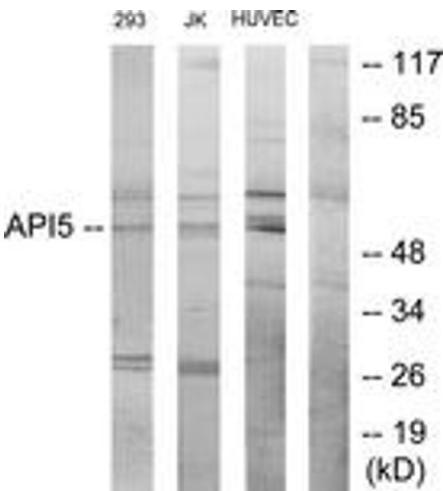
	fibroblast growth factor 2-interacting factor, fibroblast growth factor 2-interacting factor 2, migration-inducing protein MIG8 NCBI Gene Symbol: API5
Molecular Weight:	57 kDa
Gene ID:	8539
OMIM:	609774
UniProt:	<a href="#">Q9BZZ5</a>
Pathways:	<a href="#">Growth Factor Binding</a>

## Application Details

Application Notes:	WB: 1:500~1:1000 IHC: 1:50~1:100 ELISA: 1:20000
Comment:	Unigene-Number: Hs.435771 (NCBI Gene Symbol: API5)
Restrictions:	For Research Use only

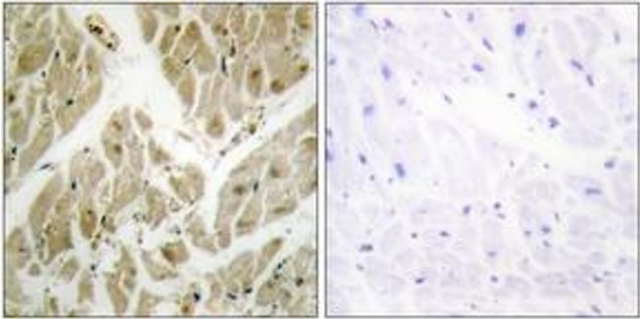
## Handling

Format:	Liquid
Concentration:	1 mg/mL
Buffer:	phosphate buffered saline (without Mg2+ and Ca2+), pH 7.4, 150 mM NaCl, 0.02 % sodium azide and 50 % glycerol.
Preservative:	Sodium azide
Precaution of Use:	This product contains sodium azide: a POISONOUS AND HAZARDOUS SUBSTANCE which should be handled by trained staff only.
Storage:	-20 °C
Storage Comment:	Stable at -20°C for at least 1 year.
Expiry Date:	12 months



Western Blotting

**Image 1.** Western blot analysis of extracts from 293/Jurkat/HuvEc cells, using API-5 Antibody. The lane on the right is treated with the synthesized peptide.



Immunohistochemistry

**Image 2.** Immunohistochemistry analysis of paraffin-embedded human heart tissue, using API-5 Antibody. The picture on the right is treated with the synthesized peptide.