

Datasheet for ABIN1534275
anti-BCOR antibody (AA 1231-1280)[Go to Product page](#)

2 Images

Overview

Quantity:	100 µg
Target:	BCOR
Binding Specificity:	AA 1231-1280
Reactivity:	Human, Mouse
Host:	Rabbit
Clonality:	Polyclonal
Conjugate:	This BCOR antibody is un-conjugated
Application:	ELISA, Western Blotting (WB), Immunohistochemistry (IHC)

Product Details

Immunogen:	The antiserum was produced against synthesized peptide derived from human BCOR.
Isotype:	IgG
Specificity:	BCOR Antibody detects endogenous levels of total BCOR protein.
Purification:	The antibody was purified from rabbit antiserum by affinity-chromatography using immunogen.
Purity:	> 95 %

Target Details

Target:	BCOR
Alternative Name:	BCOR (BCOR Products)
Background:	Synonyms: BCL-6 corepressor, BCoR, KIAA1575

Target Details

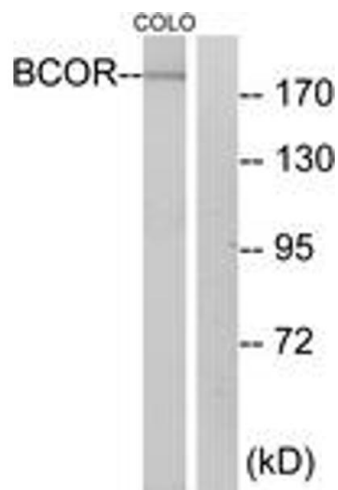
	NCBI Gene Symbol: BCOR
Molecular Weight:	192 kDa
Gene ID:	54880
OMIM:	300485
UniProt:	Q6W2J9

Application Details

Application Notes:	WB: 1:500~1:1000 IHC: 1:50~1:100 ELISA: 1:20000
Comment:	Unigene-Number: Hs.659681 (NCBI Gene Symbol: BCOR)
Restrictions:	For Research Use only

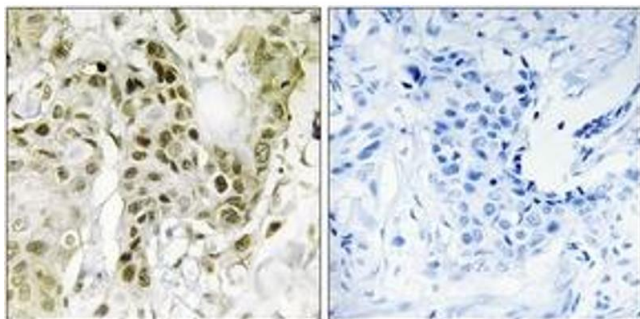
Handling

Format:	Liquid
Concentration:	1 mg/mL
Buffer:	phosphate buffered saline (without Mg ²⁺ and Ca ²⁺), pH 7.4, 150 mM NaCl, 0.02 % sodium azide and 50 % glycerol.
Preservative:	Sodium azide
Precaution of Use:	This product contains sodium azide: a POISONOUS AND HAZARDOUS SUBSTANCE which should be handled by trained staff only.
Storage:	-20 °C
Storage Comment:	Stable at -20°C for at least 1 year.
Expiry Date:	12 months



Western Blotting

Image 1. Western blot analysis of extracts from COLO cells, using BCOR Antibody. The lane on the right is treated with the synthesized peptide.



Immunohistochemistry

Image 2. Immunohistochemistry analysis of paraffin-embedded human breast carcinoma tissue, using BCOR Antibody. The picture on the right is treated with the synthesized peptide.