

Datasheet for ABIN1534279  
**anti-CABLES1 antibody (AA 561-610)**[Go to Product page](#)

## 1 Image

## Overview

Quantity:	100 µg
Target:	CABLES1
Binding Specificity:	AA 561-610
Reactivity:	Human, Mouse
Host:	Rabbit
Clonality:	Polyclonal
Conjugate:	This CABLES1 antibody is un-conjugated
Application:	Western Blotting (WB), ELISA

## Product Details

Immunogen:	The antiserum was produced against synthesized peptide derived from human Ik3-1.
Isotype:	IgG
Specificity:	Ik3-1 Antibody detects endogenous levels of total Ik3-1 protein.
Purification:	The antibody was purified from rabbit antiserum by affinity-chromatography using immunogen.
Purity:	> 95 %

## Target Details

Target:	CABLES1
Alternative Name:	Ik3-1 ( <a href="#">CABLES1 Products</a> )
Background:	Synonyms: Cdk5 and Abl enzyme substrate 1, FLJ35924,

## Target Details

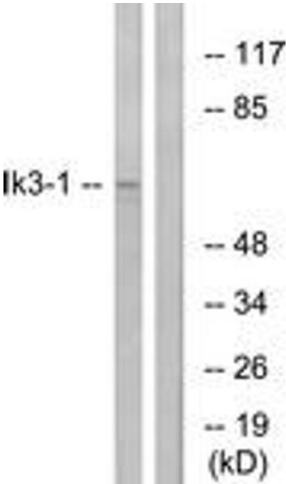
	NCBI Gene Symbol: CABLES1
Molecular Weight:	67 kDa
Gene ID:	91768
OMIM:	609194
UniProt:	<a href="#">Q8TDN4</a>

## Application Details

Application Notes:	WB: 1:500~1:1000 ELISA: 1:20000
Comment:	Unigene-Number: Hs.11108 (NCBI Gene Symbol: CABLES1)
Restrictions:	For Research Use only

## Handling

Format:	Liquid
Concentration:	1 mg/mL
Buffer:	phosphate buffered saline (without Mg <sup>2+</sup> and Ca <sup>2+</sup> ), pH 7.4, 150 mM NaCl, 0.02 % sodium azide and 50 % glycerol.
Preservative:	Sodium azide
Precaution of Use:	This product contains sodium azide: a POISONOUS AND HAZARDOUS SUBSTANCE which should be handled by trained staff only.
Storage:	-20 °C
Storage Comment:	Stable at -20°C for at least 1 year.
Expiry Date:	12 months



Western Blotting

**Image 1.** Western blot analysis of extracts from LOVO cells, using Ik3-1 Antibody. The lane on the right is treated with the synthesized peptide.