

Datasheet for ABIN1534281
anti-CDH10 antibody (AA 201-250)[Go to Product page](#)

1 Image

Overview

Quantity:	100 µg
Target:	CDH10
Binding Specificity:	AA 201-250
Reactivity:	Human, Mouse
Host:	Rabbit
Clonality:	Polyclonal
Conjugate:	This CDH10 antibody is un-conjugated
Application:	ELISA, Immunofluorescence (IF)

Product Details

Immunogen:	The antiserum was produced against synthesized peptide derived from human CDH10.
Isotype:	IgG
Specificity:	CDH10 Antibody detects endogenous levels of total CDH10 protein.
Purification:	The antibody was purified from rabbit antiserum by affinity-chromatography using immunogen.
Purity:	> 95 %

Target Details

Target:	CDH10
Alternative Name:	CDH10 (CDH10 Products)
Background:	Synonyms: CAD10, Cadherin-10, T2-cadherin, CDH10

Target Details

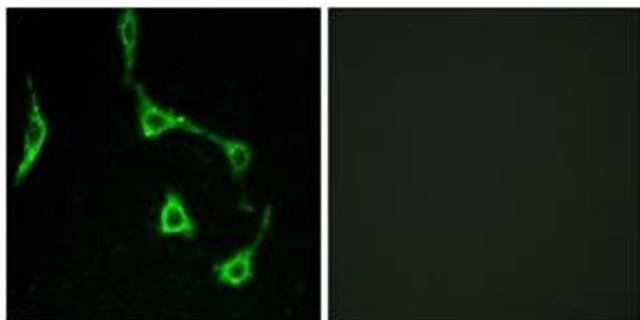
	NCBI Gene Symbol: CDH10
Molecular Weight:	88 kDa
Gene ID:	1008
OMIM:	604555
UniProt:	Q9Y6N8
Pathways:	Cell-Cell Junction Organization

Application Details

Application Notes:	IF: 1:100~1:500 ELISA: 1:40000
Comment:	Unigene-Number: Hs.92489 (NCBI Gene Symbol: CDH10)
Restrictions:	For Research Use only

Handling

Format:	Liquid
Concentration:	1 mg/mL
Buffer:	phosphate buffered saline (without Mg ²⁺ and Ca ²⁺), pH 7.4, 150 mM NaCl, 0.02 % sodium azide and 50 % glycerol.
Preservative:	Sodium azide
Precaution of Use:	This product contains sodium azide: a POISONOUS AND HAZARDOUS SUBSTANCE which should be handled by trained staff only.
Storage:	-20 °C
Storage Comment:	Stable at -20°C for at least 1 year.
Expiry Date:	12 months



Immunofluorescence

Image 1. Immunofluorescence analysis of LOVO cells, using CDH10 Antibody. The picture on the right is treated with the synthesized peptide.