



[Go to Product page](#)

Datasheet for ABIN1534286

anti-LI Cadherin antibody (AA 341-390)

2 Images

Overview

Quantity:	100 µg
Target:	LI Cadherin
Binding Specificity:	AA 341-390
Reactivity:	Human
Host:	Rabbit
Clonality:	Polyclonal
Conjugate:	This LI Cadherin antibody is un-conjugated
Application:	Western Blotting (WB), ELISA, Immunofluorescence (IF)

Product Details

Immunogen:	The antiserum was produced against synthesized peptide derived from human CDH17.
Isotype:	IgG
Specificity:	CDH17 Antibody detects endogenous levels of total CDH17 protein.
Purification:	The antibody was purified from rabbit antiserum by affinity-chromatography using immunogen.
Purity:	> 95 %

Target Details

Target:	LI Cadherin
Alternative Name:	CDH17 (LI Cadherin Products)
Background:	Synonyms: CAD17, CADH, Intestinal peptide-associated transporter HPT-1, LI-cad, LI-cadherin,

Target Details

Liver-intestine-cadherin, cadherin, LI
NCBI Gene Symbol: CDH17

Molecular Weight: 92 kDa

Gene ID: 1015

OMIM: 603017

UniProt: [Q12864](#)

Application Details

Application Notes: WB: 1:500~1:1000 IF: 1:100~1:500 ELISA: 1:40000

Comment: Unigene-Number: Hs.591853 (NCBI Gene Symbol: CDH17)

Restrictions: For Research Use only

Handling

Format: Liquid

Concentration: 1 mg/mL

Buffer: phosphate buffered saline (without Mg²⁺ and Ca²⁺), pH 7.4, 150 mM NaCl, 0.02 % sodium azide and 50 % glycerol.

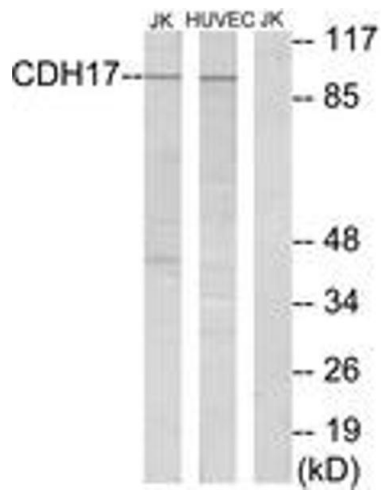
Preservative: Sodium azide

Precaution of Use: This product contains sodium azide: a POISONOUS AND HAZARDOUS SUBSTANCE which should be handled by trained staff only.

Storage: -20 °C

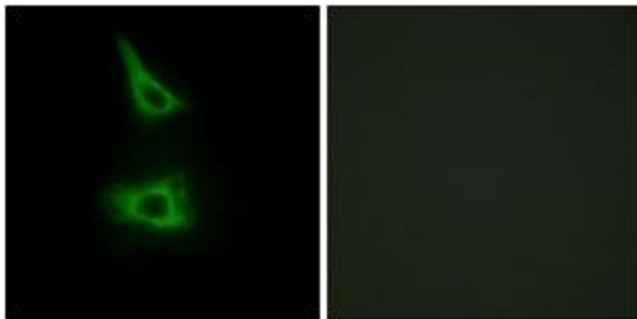
Storage Comment: Stable at -20°C for at least 1 year.

Expiry Date: 12 months



Western Blotting

Image 1. Western blot analysis of extracts from Jurkat/HuVEC cells, using CDH17 Antibody. The lane on the right is treated with the synthesized peptide.



Immunofluorescence

Image 2. Immunofluorescence analysis of HeLa cells, using CDH17 Antibody. The picture on the right is treated with the synthesized peptide.