



[Go to Product page](#)

Datasheet for ABIN1534289

anti-Cadherin 20 antibody (AA 111-160)

2 Images

Overview

Quantity:	100 µg
Target:	Cadherin 20 (CDH20)
Binding Specificity:	AA 111-160
Reactivity:	Human, Mouse, Rat
Host:	Rabbit
Clonality:	Polyclonal
Conjugate:	This Cadherin 20 antibody is un-conjugated
Application:	ELISA, Immunohistochemistry (IHC), Immunofluorescence (IF)

Product Details

Immunogen:	The antiserum was produced against synthesized peptide derived from human CDH20.
Isotype:	IgG
Specificity:	CDH20 Antibody detects endogenous levels of total CDH20 protein.
Purification:	The antibody was purified from rabbit antiserum by affinity-chromatography using immunogen.
Purity:	> 95 %

Target Details

Target:	Cadherin 20 (CDH20)
Alternative Name:	CDH20 (CDH20 Products)
Background:	Synonyms: Cadherin-20, CDH20, CAD20, CDH7L3

Target Details

NCBI Gene Symbol: CDH20

Molecular Weight: 89 kDa

Gene ID: 28316

OMIM: 605807

UniProt: [Q9HBT6](#)

Application Details

Application Notes: IHC: 1:50~1:100 IF: 1:100~1:500 ELISA: 1:5000

Comment: Unigene-Number: Hs.671510 (NCBI Gene Symbol: CDH20)

Restrictions: For Research Use only

Handling

Format: Liquid

Concentration: 1 mg/mL

Buffer: phosphate buffered saline (without Mg²⁺ and Ca²⁺), pH 7.4, 150 mM NaCl, 0.02 % sodium azide and 50 % glycerol.

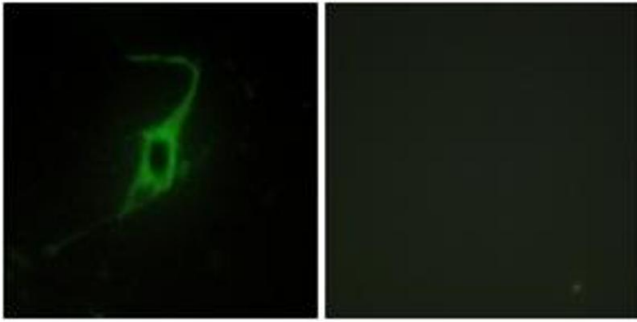
Preservative: Sodium azide

Precaution of Use: This product contains sodium azide: a POISONOUS AND HAZARDOUS SUBSTANCE which should be handled by trained staff only.

Storage: -20 °C

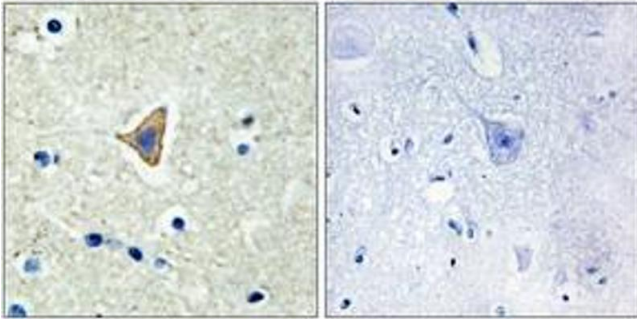
Storage Comment: Stable at -20°C for at least 1 year.

Expiry Date: 12 months



Immunofluorescence

Image 1. Immunofluorescence analysis of NIH-3T3 cells, using CDH20 Antibody. The picture on the right is treated with the synthesized peptide.



Immunohistochemistry

Image 2. Immunohistochemistry analysis of paraffin-embedded human brain tissue, using CDH20 Antibody. The picture on the right is treated with the synthesized peptide.