

Datasheet for ABIN1534292  
**anti-Cadherin 24 antibody (AA 81-130)**[Go to Product page](#)

## 1 Image

## Overview

Quantity:	100 µg
Target:	Cadherin 24 (CDH24)
Binding Specificity:	AA 81-130
Reactivity:	Human, Mouse
Host:	Rabbit
Clonality:	Polyclonal
Conjugate:	This Cadherin 24 antibody is un-conjugated
Application:	ELISA, Immunofluorescence (IF)

## Product Details

Immunogen:	The antiserum was produced against synthesized peptide derived from human CDH24.
Isotype:	IgG
Specificity:	CDH24 Antibody detects endogenous levels of total CDH24 protein.
Purification:	The antibody was purified from rabbit antiserum by affinity-chromatography using immunogen.
Purity:	> 95 %

## Target Details

Target:	Cadherin 24 (CDH24)
Alternative Name:	CDH24 ( <a href="#">CDH24 Products</a> )
Background:	Synonyms: Cadherin-24, CDH24, CDH11L, CAD24

## Target Details

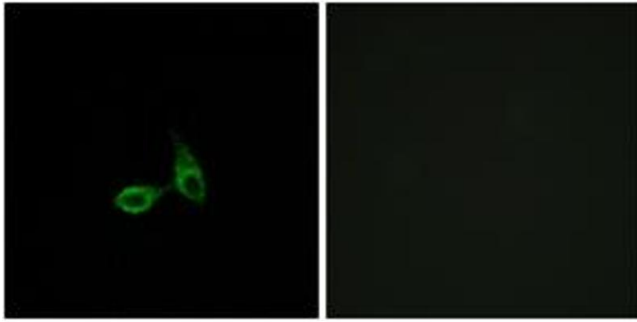
	NCBI Gene Symbol: CDH24
Molecular Weight:	87 kDa
Gene ID:	64403
UniProt:	<a href="#">Q86UP0</a>
Pathways:	<a href="#">Cell-Cell Junction Organization</a>

## Application Details

Application Notes:	IF: 1:100~1:500 ELISA: 1:10000
Comment:	Unigene-Number: Hs.155912 (NCBI Gene Symbol: CDH24)
Restrictions:	For Research Use only

## Handling

Format:	Liquid
Concentration:	1 mg/mL
Buffer:	phosphate buffered saline (without Mg <sup>2+</sup> and Ca <sup>2+</sup> ), pH 7.4, 150 mM NaCl, 0.02 % sodium azide and 50 % glycerol.
Preservative:	Sodium azide
Precaution of Use:	This product contains sodium azide: a POISONOUS AND HAZARDOUS SUBSTANCE which should be handled by trained staff only.
Storage:	-20 °C
Storage Comment:	Stable at -20°C for at least 1 year.
Expiry Date:	12 months



#### Immunofluorescence

**Image 1.** Immunofluorescence analysis of HepG2 cells, using CDH24 Antibody. The picture on the right is treated with the synthesized peptide.