

Datasheet for ABIN1534303

anti-Cell Adhesion Molecule 4 antibody (AA 339-388)[Go to Product page](#)**3** Images

Overview

Quantity:	100 µg
Target:	Cell Adhesion Molecule 4 (CADM4)
Binding Specificity:	AA 339-388
Reactivity:	Human, Mouse, Rat
Host:	Rabbit
Clonality:	Polyclonal
Conjugate:	This Cell Adhesion Molecule 4 antibody is un-conjugated
Application:	Western Blotting (WB), ELISA, Immunohistochemistry (IHC), Immunofluorescence (IF)

Product Details

Immunogen:	The antiserum was produced against synthesized peptide derived from human CADM4.
Isotype:	IgG
Specificity:	CADM4 Antibody detects endogenous levels of total CADM4 protein.
Purification:	The antibody was purified from rabbit antiserum by affinity-chromatography using immunogen.
Purity:	> 95 %

Target Details

Target:	Cell Adhesion Molecule 4 (CADM4)
Alternative Name:	CADM4 (CADM4 Products)
Background:	Synonyms: Cell adhesion molecule 4, Immunoglobulin superfamily member 4C, Nectin-like

Target Details

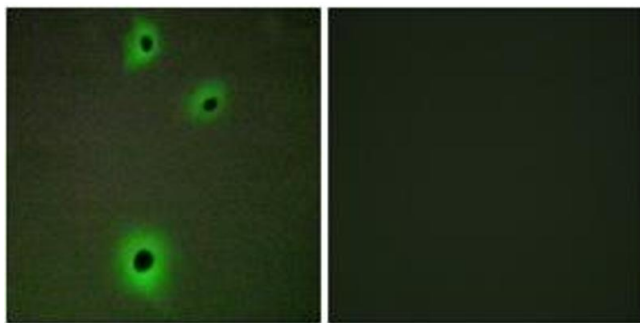
	protein 4, TSLC1-like protein 2, CADM4, IGSF4C, NECL4, TSLL2 NCBI Gene Symbol: CADM4
Molecular Weight:	42 kDa
Gene ID:	199731
OMIM:	609744
UniProt:	Q8NFZ8

Application Details

Application Notes:	WB: 1:500~1:1000 IHC: 1:50~1:100 IF: 1:100~1:500 ELISA: 1:20000
Comment:	Unigene-Number: Hs.370984 (NCBI Gene Symbol: CADM4)
Restrictions:	For Research Use only

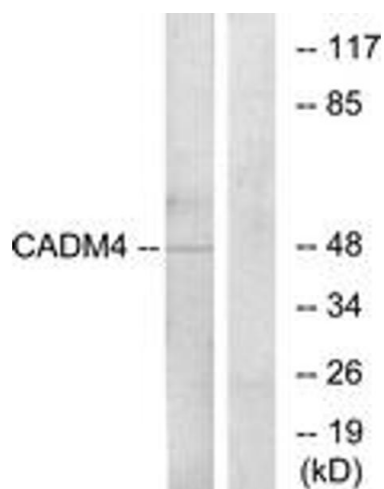
Handling

Format:	Liquid
Concentration:	1 mg/mL
Buffer:	phosphate buffered saline (without Mg ²⁺ and Ca ²⁺), pH 7.4, 150 mM NaCl, 0.02 % sodium azide and 50 % glycerol.
Preservative:	Sodium azide
Precaution of Use:	This product contains sodium azide: a POISONOUS AND HAZARDOUS SUBSTANCE which should be handled by trained staff only.
Storage:	-20 °C
Storage Comment:	Stable at -20°C for at least 1 year.
Expiry Date:	12 months



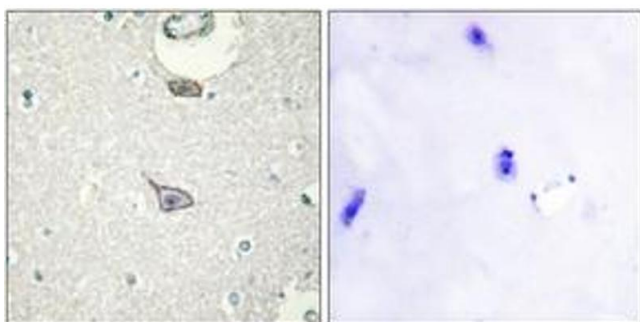
Immunofluorescence

Image 1. Immunofluorescence analysis of A549 cells, using CADM4 Antibody. The picture on the right is treated with the synthesized peptide.



Western Blotting

Image 2. Western blot analysis of extracts from RAW264.7 cells, using CADM4 Antibody. The lane on the right is treated with the synthesized peptide.



Immunohistochemistry

Image 3. Immunohistochemistry analysis of paraffin-embedded human brain tissue, using CADM4 Antibody. The picture on the right is treated with the synthesized peptide.