



[Go to Product page](#)

Datasheet for ABIN1534306  
**anti-CA14 antibody (AA 291-340)**

1 Image

### Overview

Quantity:	100 µg
Target:	CA14
Binding Specificity:	AA 291-340
Reactivity:	Human, Mouse
Host:	Rabbit
Clonality:	Polyclonal
Conjugate:	This CA14 antibody is un-conjugated
Application:	ELISA, Immunohistochemistry (IHC), Immunofluorescence (IF)

### Product Details

Immunogen:	The antiserum was produced against synthesized peptide derived from human CAR14.
Isotype:	IgG
Specificity:	CAR14 Antibody detects endogenous levels of total CAR14 protein.
Purification:	The antibody was purified from rabbit antiserum by affinity-chromatography using immunogen.
Purity:	> 95 %

### Target Details

Target:	CA14
Alternative Name:	CAR14 ( <a href="#">CA14 Products</a> )
Background:	Synonyms: Caspase recruitment domain-containing protein 14, CARD-containing MAGUK

## Target Details

---

protein 2, Carma 2, CARD14, CARMA2, CAR14  
NCBI Gene Symbol: CARD14

Molecular Weight: 113 kDa

Gene ID: 79092

OMIM: 607211

UniProt: [Q9BXL6](#)

## Application Details

---

Application Notes: IHC: 1:50~1:100 IF: 1:100~1:500 ELISA: 1:40000

Comment: Unigene-Number: Hs.675480, Hs.696253 (NCBI Gene Symbol: CARD14)

Restrictions: For Research Use only

## Handling

---

Format: Liquid

Concentration: 1 mg/mL

Buffer: phosphate buffered saline (without Mg<sup>2+</sup> and Ca<sup>2+</sup>), pH 7.4, 150 mM NaCl, 0.02 % sodium azide and 50 % glycerol.

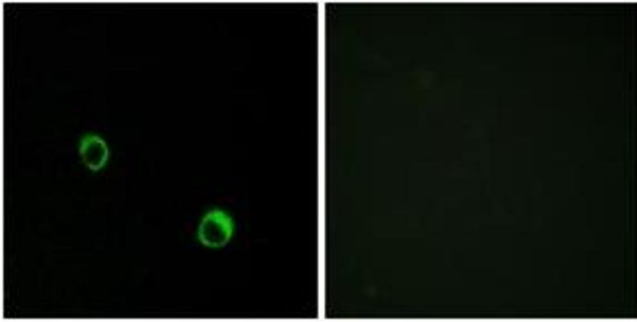
Preservative: Sodium azide

Precaution of Use: This product contains sodium azide: a POISONOUS AND HAZARDOUS SUBSTANCE which should be handled by trained staff only.

Storage: -20 °C

Storage Comment: Stable at -20°C for at least 1 year.

Expiry Date: 12 months



### Immunofluorescence

**Image 1.** Immunofluorescence analysis of MCF7 cells, using CAR14 Antibody. The picture on the right is treated with the synthesized peptide.