

Datasheet for ABIN1534309
anti-HCCS antibody (AA 81-130)



[Go to Product page](#)

3 Images

Overview

Quantity:	100 µL
Target:	HCCS
Binding Specificity:	AA 81-130
Reactivity:	Human, Mouse
Host:	Rabbit
Clonality:	Polyclonal
Conjugate:	This HCCS antibody is un-conjugated
Application:	Western Blotting (WB), Immunohistochemistry (IHC), ELISA, Immunofluorescence (IF)

Product Details

Immunogen:	The antiserum was produced against synthesized peptide derived from human Cytochrome c-type Heme Lyase.
Isotype:	IgG
Specificity:	Cytochrome c-type Heme Lyase Antibody detects endogenous levels of total Cytochrome c-type Heme Lyase protein.
Purification:	The antibody was purified from rabbit antiserum by affinity-chromatography using immunogen.
Purity:	> 95 %

Target Details

Target:	HCCS
---------	------

Target Details

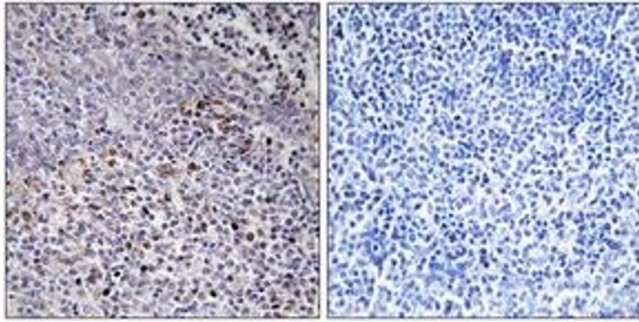
Alternative Name:	Cytochrome C-Type Heme Lyase (HCCS Products)
Background:	Synonyms: Cytochrome c-type heme lyase, CCHL, Holocytochrome c-type synthase, HCCS, CCHL NCBI Gene Symbol: HCCS
Molecular Weight:	30 kDa
Gene ID:	3052
OMIM:	300056
UniProt:	P53701

Application Details

Application Notes:	WB: 1:500~1:1000 IHC: 1:50~1:100 IF: 1:100~1:500 ELISA: 1:20000
Comment:	Unigene-Number: Hs.211571 (NCBI Gene Symbol: HCCS)
Restrictions:	For Research Use only

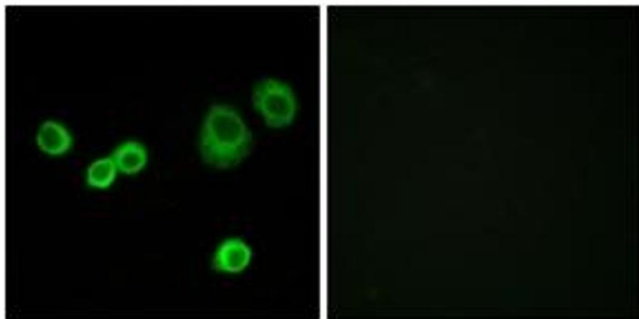
Handling

Format:	Liquid
Concentration:	1 mg/mL
Buffer:	phosphate buffered saline (without Mg ²⁺ and Ca ²⁺), pH 7.4, 150 mM NaCl, 0.02 % sodium azide and 50 % glycerol.
Preservative:	Sodium azide
Precaution of Use:	This product contains sodium azide: a POISONOUS AND HAZARDOUS SUBSTANCE which should be handled by trained staff only.
Storage:	-20 °C
Storage Comment:	Stable at -20°C for at least 1 year.
Expiry Date:	12 months



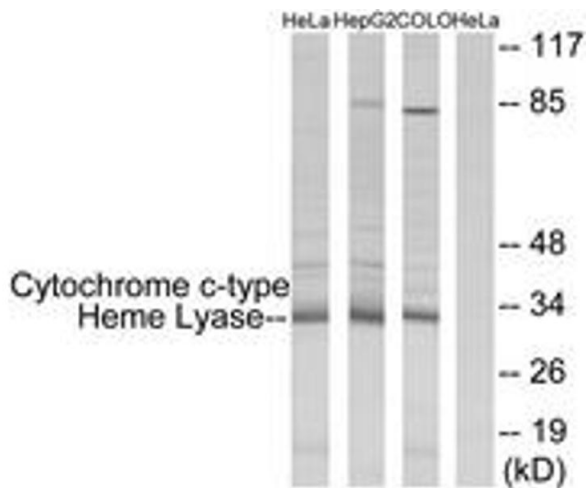
Immunohistochemistry

Image 1. Immunohistochemistry analysis of paraffin-embedded human tonsil tissue, using Cytochrome c-type Heme Lyase Antibody. The picture on the right is treated with the synthesized peptide.



Immunofluorescence

Image 2. Immunofluorescence analysis of MCF7 cells, using Cytochrome c-type Heme Lyase Antibody. The picture on the right is treated with the synthesized peptide.



Western Blotting

Image 3. Western blot analysis of extracts from HeLa/HepG2/COLO cells, using Cytochrome c-type Heme Lyase Antibody. The lane on the right is treated with the synthesized peptide.