



[Go to Product page](#)

Datasheet for ABIN1534324  
**anti-CDCA7 antibody (AA 141-190)**

1 Image

Overview

Quantity:	100 µg
Target:	CDCA7
Binding Specificity:	AA 141-190
Reactivity:	Human, Rat, Mouse
Host:	Rabbit
Clonality:	Polyclonal
Conjugate:	This CDCA7 antibody is un-conjugated
Application:	Western Blotting (WB), ELISA

Product Details

Immunogen:	The antiserum was produced against synthesized peptide derived from human CDCA7.
Isotype:	IgG
Specificity:	CDCA7 Antibody detects endogenous levels of total CDCA7 protein.
Purification:	The antibody was purified from rabbit antiserum by affinity-chromatography using immunogen.
Purity:	> 95 %

Target Details

Target:	CDCA7
Alternative Name:	CDCA7 ( <a href="#">CDCA7 Products</a> )
Background:	Synonyms: Cell division cycle-associated protein 7, Protein JPO1, JPO1

## Target Details

---

NCBI Gene Symbol: CDCA7

Molecular Weight: 42 kDa

Gene ID: 83879

OMIM: 609937

UniProt: [Q9BWT1](#)

## Application Details

---

Application Notes: WB: 1:500~1:1000 ELISA: 1:20000

Comment: Unigene-Number: Hs.470654 (NCBI Gene Symbol: CDCA7)

Restrictions: For Research Use only

## Handling

---

Format: Liquid

Concentration: 1 mg/mL

Buffer: phosphate buffered saline (without Mg<sup>2+</sup> and Ca<sup>2+</sup>), pH 7.4, 150 mM NaCl, 0.02 % sodium azide and 50 % glycerol.

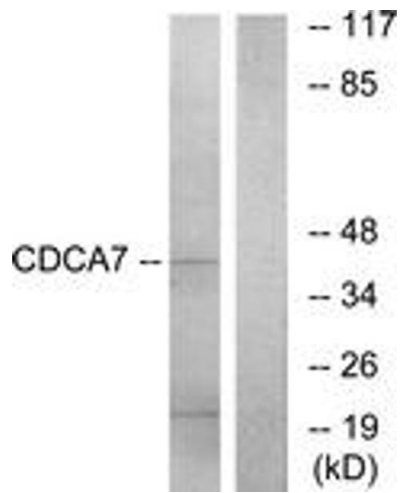
Preservative: Sodium azide

Precaution of Use: This product contains sodium azide: a POISONOUS AND HAZARDOUS SUBSTANCE which should be handled by trained staff only.

Storage: -20 °C

Storage Comment: Stable at -20°C for at least 1 year.

Expiry Date: 12 months



#### Western Blotting

**Image 1.** Western blot analysis of extracts from K562 cells, using CDCA7 Antibody. The lane on the right is treated with the synthesized peptide.