



[Go to Product page](#)

Datasheet for ABIN1534327  
**anti-CELSR2 antibody (AA 2781-2830)**

2 Images

Overview

Quantity:	100 µg
Target:	CELSR2
Binding Specificity:	AA 2781-2830
Reactivity:	Human, Mouse, Rat
Host:	Rabbit
Clonality:	Polyclonal
Conjugate:	This CELSR2 antibody is un-conjugated
Application:	Immunohistochemistry (IHC), ELISA, Immunofluorescence (IF)

Product Details

Immunogen:	The antiserum was produced against synthesized peptide derived from human CELSR2.
Isotype:	IgG
Specificity:	CELSR2 Antibody detects endogenous levels of total CELSR2 protein.
Purification:	The antibody was purified from rabbit antiserum by affinity-chromatography using immunogen.
Purity:	> 95 %

Target Details

Target:	CELSR2
Alternative Name:	CELSR2 ( <a href="#">CELSR2 Products</a> )
Background:	Synonyms: CDHF10, EGF-like-domain, multiple 2, EGFL2, MEGF3, cadherin EGF LAG seven-pass

## Target Details

---

G-type receptor 2, epidermal growth factor-like 2, flamingo 1, flamingo1, multiple epidermal growth factor-like domains 3,  
NCBI Gene Symbol: CELSR2

Molecular Weight: 317 kDa

Gene ID: 1952

OMIM: 604265

UniProt: [Q9HCU4](#)

## Application Details

---

Application Notes: IHC: 1:50~1:100 IF: 1:100~1:500 ELISA: 1:5000

Comment: Unigene-Number: Hs.57652 (NCBI Gene Symbol: CELSR2)

Restrictions: For Research Use only

## Handling

---

Format: Liquid

Concentration: 1 mg/mL

Buffer: phosphate buffered saline (without Mg<sup>2+</sup> and Ca<sup>2+</sup>), pH 7.4, 150 mM NaCl, 0.02 % sodium azide and 50 % glycerol.

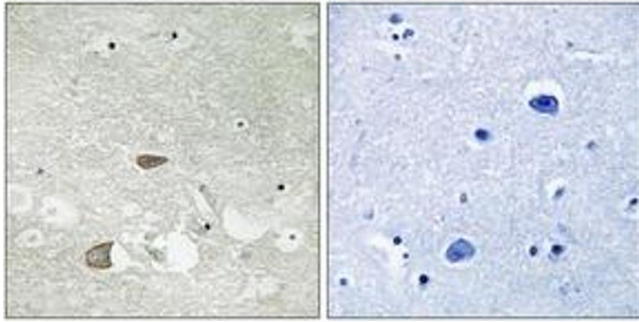
Preservative: Sodium azide

Precaution of Use: This product contains sodium azide: a POISONOUS AND HAZARDOUS SUBSTANCE which should be handled by trained staff only.

Storage: -20 °C

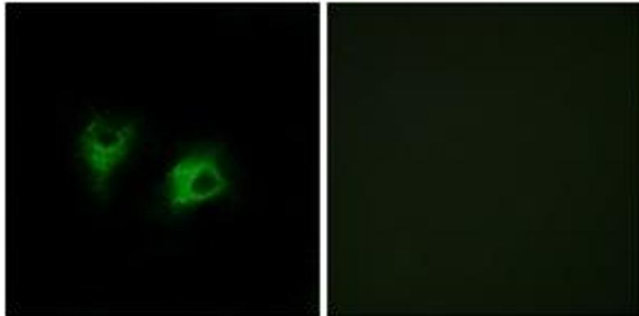
Storage Comment: Stable at -20°C for at least 1 year.

Expiry Date: 12 months



### Immunohistochemistry

**Image 1.** Immunohistochemistry analysis of paraffin-embedded human brain tissue, using CELSR2 Antibody. The picture on the right is treated with the synthesized peptide.



### Immunofluorescence

**Image 2.** Immunofluorescence analysis of COS7 cells, using CELSR2 Antibody. The picture on the right is treated with the synthesized peptide.