

Datasheet for ABIN1534337
anti-COL1A2 antibody (AA 471-520)[Go to Product page](#)

3 Images

Overview

Quantity:	100 µg
Target:	COL1A2
Binding Specificity:	AA 471-520
Reactivity:	Human
Host:	Rabbit
Clonality:	Polyclonal
Conjugate:	This COL1A2 antibody is un-conjugated
Application:	Western Blotting (WB), Immunohistochemistry (IHC), ELISA, Immunofluorescence (IF)

Product Details

Immunogen:	The antiserum was produced against synthesized peptide derived from human Collagen I alpha2.
Isotype:	IgG
Specificity:	Collagen I alpha2 Antibody detects endogenous levels of total Collagen I alpha2 protein.
Purification:	The antibody was purified from rabbit antiserum by affinity-chromatography using immunogen.
Purity:	> 95 %

Target Details

Target:	COL1A2
Alternative Name:	Collagen I Alpha2 (COL1A2 Products)

Target Details

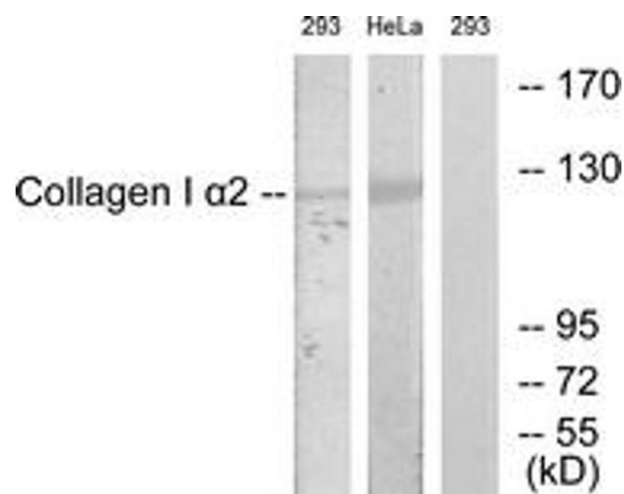
Background:	Synonyms: alpha 2 type i collagen, co1a2, col1a2, collagen, type i, alpha 2, oi4 NCBI Gene Symbol: COL1A2
Molecular Weight:	129 kDa
Gene ID:	1278
OMIM:	120160
UniProt:	P08123

Application Details

Application Notes:	WB: 1:500~1:1000 IHC: 1:50~1:100 IF: 1:100~1:500 ELISA: 1:20000
Comment:	Unigene-Number: Hs.489142 (NCBI Gene Symbol: COL1A2)
Restrictions:	For Research Use only

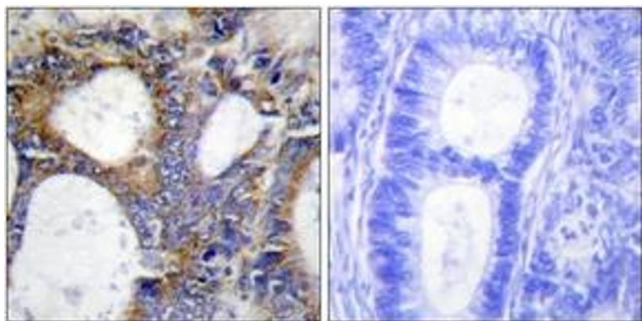
Handling

Format:	Liquid
Concentration:	1 mg/mL
Buffer:	phosphate buffered saline (without Mg ²⁺ and Ca ²⁺), pH 7.4, 150 mM NaCl, 0.02 % sodium azide and 50 % glycerol.
Preservative:	Sodium azide
Precaution of Use:	This product contains sodium azide: a POISONOUS AND HAZARDOUS SUBSTANCE which should be handled by trained staff only.
Storage:	-20 °C
Storage Comment:	Stable at -20°C for at least 1 year.
Expiry Date:	12 months



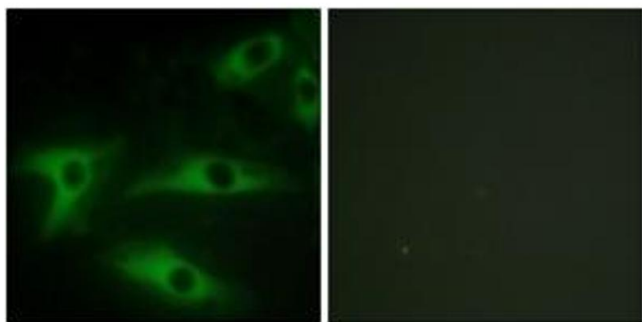
Western Blotting

Image 1. Western blot analysis of extracts from 293/HeLa cells, using Collagen I alpha2 Antibody. The lane on the right is treated with the synthesized peptide.



Immunohistochemistry

Image 2. Immunohistochemistry analysis of paraffin-embedded human colon carcinoma tissue, using Collagen I alpha2 Antibody. The picture on the right is treated with the synthesized peptide.



Immunofluorescence

Image 3. Immunofluorescence analysis of HeLa cells, using Collagen I alpha2 Antibody. The picture on the right is treated with the synthesized peptide.