

Datasheet for ABIN1534343
anti-COL5A1 antibody (AA 301-350)[Go to Product page](#)

3 Images

Overview

Quantity:	100 µg
Target:	COL5A1
Binding Specificity:	AA 301-350
Reactivity:	Human
Host:	Rabbit
Clonality:	Polyclonal
Conjugate:	This COL5A1 antibody is un-conjugated
Application:	Western Blotting (WB), Immunohistochemistry (IHC), ELISA, Immunofluorescence (IF)

Product Details

Immunogen:	The antiserum was produced against synthesized peptide derived from human Collagen V alpha1.
Isotype:	IgG
Specificity:	Collagen V alpha1 Antibody detects endogenous levels of total Collagen V alpha1 protein.
Purification:	The antibody was purified from rabbit antiserum by affinity-chromatography using immunogen.
Purity:	> 95 %

Target Details

Target:	COL5A1
Alternative Name:	Collagen V Alpha1 (COL5A1 Products)

Target Details

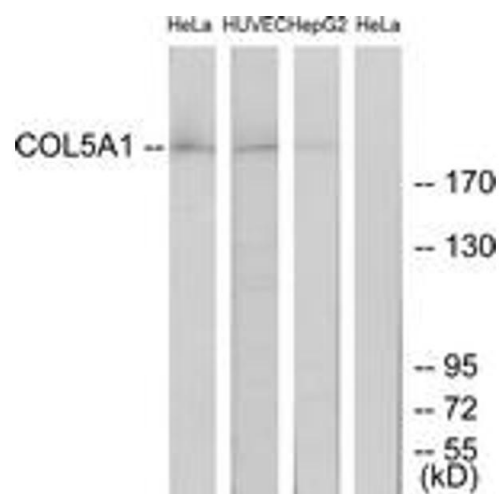
Background:	Synonyms: Collagen alpha-1(V) chain, CO5A1 NCBI Gene Symbol: COL5A1
Molecular Weight:	183 kDa
Gene ID:	1289
OMIM:	120215
UniProt:	P20908
Pathways:	Growth Factor Binding

Application Details

Application Notes:	WB: 1:500~1:1000 IHC: 1:50~1:100 IF: 1:100~1:500 ELISA: 1:20000
Comment:	Unigene-Number: Hs.210283 (NCBI Gene Symbol: COL5A1)
Restrictions:	For Research Use only

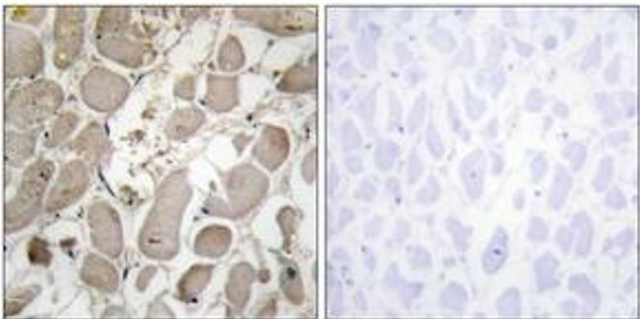
Handling

Format:	Liquid
Concentration:	1 mg/mL
Buffer:	phosphate buffered saline (without Mg ²⁺ and Ca ²⁺), pH 7.4, 150 mM NaCl, 0.02 % sodium azide and 50 % glycerol.
Preservative:	Sodium azide
Precaution of Use:	This product contains sodium azide: a POISONOUS AND HAZARDOUS SUBSTANCE which should be handled by trained staff only.
Storage:	-20 °C
Storage Comment:	Stable at -20°C for at least 1 year.
Expiry Date:	12 months



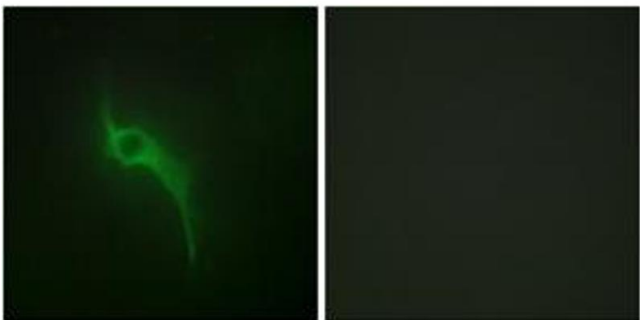
Western Blotting

Image 1. Western blot analysis of extracts from HeLa/HuVEC/HepG2 cells, using Collagen V alpha1 Antibody. The lane on the right is treated with the synthesized peptide.



Immunohistochemistry

Image 2. Immunohistochemistry analysis of paraffin-embedded human heart tissue, using Collagen V alpha1 Antibody. The picture on the right is treated with the synthesized peptide.



Immunofluorescence

Image 3. Immunofluorescence analysis of HeLa cells, using Collagen V alpha1 Antibody. The picture on the right is treated with the synthesized peptide.