



[Go to Product page](#)

Datasheet for ABIN1534347  
**anti-COL6A2 antibody (AA 691-740)**

2 Images

### Overview

Quantity:	100 µg
Target:	COL6A2
Binding Specificity:	AA 691-740
Reactivity:	Human, Mouse
Host:	Rabbit
Clonality:	Polyclonal
Conjugate:	This COL6A2 antibody is un-conjugated
Application:	Western Blotting (WB), ELISA, Immunohistochemistry (IHC)

### Product Details

Immunogen:	The antiserum was produced against synthesized peptide derived from human Collagen VI alpha2.
Isotype:	IgG
Specificity:	Collagen VI alpha2 Antibody detects endogenous levels of total Collagen VI alpha2 protein.
Purification:	The antibody was purified from rabbit antiserum by affinity-chromatography using immunogen.
Purity:	> 95 %

### Target Details

Target:	COL6A2
Abstract:	<a href="#">COL6A2 Products</a>

## Target Details

---

Background:	Synonyms: alpha 2 type VI collagen, collagen alpha-2 NCBI Gene Symbol: COL6A2
Molecular Weight:	108 kDa
Gene ID:	1292
OMIM:	120240
UniProt:	<a href="#">P12110</a>

## Application Details

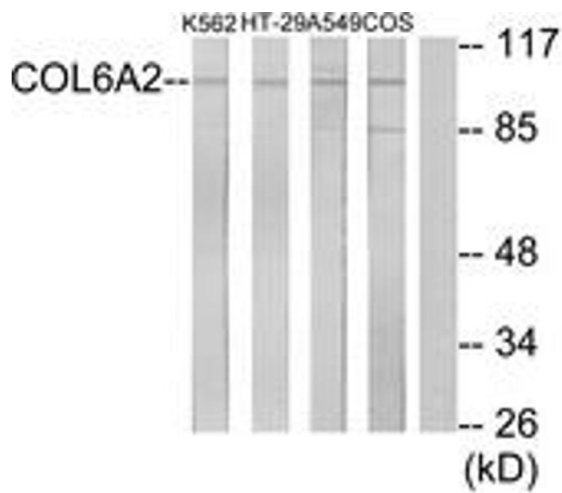
---

Application Notes:	WB: 1:500~1:1000 IHC: 1:50~1:100 ELISA: 1:10000
Comment:	Unigene-Number: Hs.420269, Hs.625041 (NCBI Gene Symbol: COL6A2)
Restrictions:	For Research Use only

## Handling

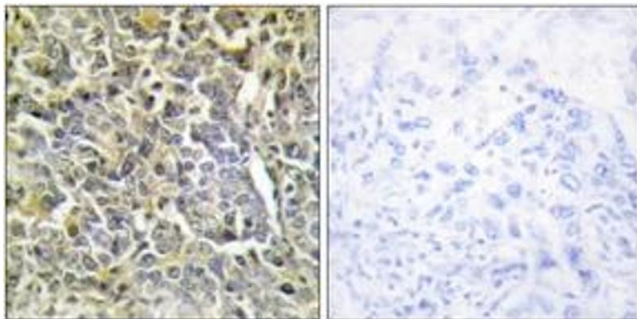
---

Format:	Liquid
Concentration:	1 mg/mL
Buffer:	phosphate buffered saline (without Mg <sup>2+</sup> and Ca <sup>2+</sup> ), pH 7.4, 150 mM NaCl, 0.02 % sodium azide and 50 % glycerol.
Preservative:	Sodium azide
Precaution of Use:	This product contains sodium azide: a POISONOUS AND HAZARDOUS SUBSTANCE which should be handled by trained staff only.
Storage:	-20 °C
Storage Comment:	Stable at -20°C for at least 1 year.
Expiry Date:	12 months



### Western Blotting

**Image 1.** Western blot analysis of extracts from K562/A549/HT-29/COS7 cells, using Collagen VI alpha2 Antibody. The lane on the right is treated with the synthesized peptide.



### Immunohistochemistry

**Image 2.** Immunohistochemistry analysis of paraffin-embedded human lung carcinoma tissue, using Collagen VI alpha2 Antibody. The picture on the right is treated with the synthesized peptide.