

Datasheet for ABIN1534351
anti-COL11A1 antibody (AA 581-630)[Go to Product page](#)

1 Image

Overview

Quantity:	100 µg
Target:	COL11A1
Binding Specificity:	AA 581-630
Reactivity:	Human, Mouse
Host:	Rabbit
Clonality:	Polyclonal
Conjugate:	This COL11A1 antibody is un-conjugated
Application:	ELISA, Western Blotting (WB)

Product Details

Immunogen:	The antiserum was produced against synthesized peptide derived from human Collagen XI alpha1.
Isotype:	IgG
Specificity:	Collagen XI alpha1 Antibody detects endogenous levels of total Collagen XI alpha1 protein.
Purification:	The antibody was purified from rabbit antiserum by affinity-chromatography using immunogen.
Purity:	> 95 %

Target Details

Target:	COL11A1
Alternative Name:	Collagen XI Alpha1 (COL11A1 Products)

Target Details

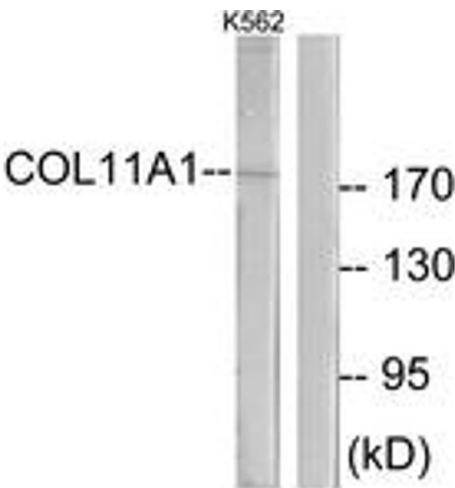
Background:	Synonyms: Collagen alpha-1(XI) chain, COBA1 NCBI Gene Symbol: COL11A1
Molecular Weight:	181 kDa
Gene ID:	1301
OMIM:	120280
UniProt:	P12107
Pathways:	Sensory Perception of Sound

Application Details

Application Notes:	WB: 1:500~1:1000 ELISA: 1:10000
Comment:	Unigene-Number: Hs.523446 (NCBI Gene Symbol: COL11A1)
Restrictions:	For Research Use only

Handling

Format:	Liquid
Concentration:	1 mg/mL
Buffer:	phosphate buffered saline (without Mg ²⁺ and Ca ²⁺), pH 7.4, 150 mM NaCl, 0.02 % sodium azide and 50 % glycerol.
Preservative:	Sodium azide
Precaution of Use:	This product contains sodium azide: a POISONOUS AND HAZARDOUS SUBSTANCE which should be handled by trained staff only.
Storage:	-20 °C
Storage Comment:	Stable at -20°C for at least 1 year.
Expiry Date:	12 months



Western Blotting

Image 1. Western blot analysis of extracts from K562 cells, using Collagen XI alpha1 Antibody. The lane on the right is treated with the synthesized peptide.