

Datasheet for ABIN1534360  
**anti-COL20A1 antibody (AA 1151-1200)**[Go to Product page](#)

## 3 Images

## Overview

Quantity:	100 µg
Target:	COL20A1
Binding Specificity:	AA 1151-1200
Reactivity:	Human, Mouse, Rat
Host:	Rabbit
Clonality:	Polyclonal
Conjugate:	This COL20A1 antibody is un-conjugated
Application:	ELISA, Western Blotting (WB), Immunohistochemistry (IHC), Immunofluorescence (IF)

## Product Details

Immunogen:	The antiserum was produced against synthesized peptide derived from human Collagen XX alpha1.
Isotype:	IgG
Specificity:	Collagen XX alpha1 Antibody detects endogenous levels of total Collagen XX alpha1 protein.
Purification:	The antibody was purified from rabbit antiserum by affinity-chromatography using immunogen.
Purity:	> 95 %

## Target Details

Target:	COL20A1
Alternative Name:	Collagen XX Alpha1 ( <a href="#">COL20A1 Products</a> )

## Target Details

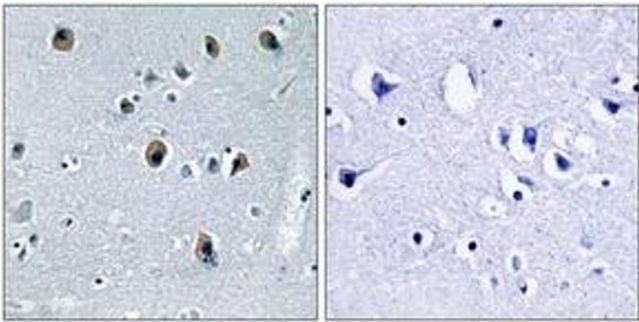
Background:	Synonyms: Collagen alpha-1(XX) chain, COKA1 NCBI Gene Symbol: COL20A1
Molecular Weight:	140 kDa
Gene ID:	57642, 1301, 1289
OMIM:	120280
UniProt:	<a href="#">Q9P218</a> , <a href="#">P12107</a> , <a href="#">P20908</a>

## Application Details

Application Notes:	WB: 1:500~1:1000 IHC: 1:50~1:100 IF: 1:100~1:500 ELISA: 1:20000
Comment:	Unigene-Number: Hs.271285, Hs.523446, Hs.210283 (NCBI Gene Symbol: COL20A1)
Restrictions:	For Research Use only

## Handling

Format:	Liquid
Concentration:	1 mg/mL
Buffer:	phosphate buffered saline (without Mg <sup>2+</sup> and Ca <sup>2+</sup> ), pH 7.4, 150 mM NaCl, 0.02 % sodium azide and 50 % glycerol.
Preservative:	Sodium azide
Precaution of Use:	This product contains sodium azide: a POISONOUS AND HAZARDOUS SUBSTANCE which should be handled by trained staff only.
Storage:	-20 °C
Storage Comment:	Stable at -20°C for at least 1 year.
Expiry Date:	12 months



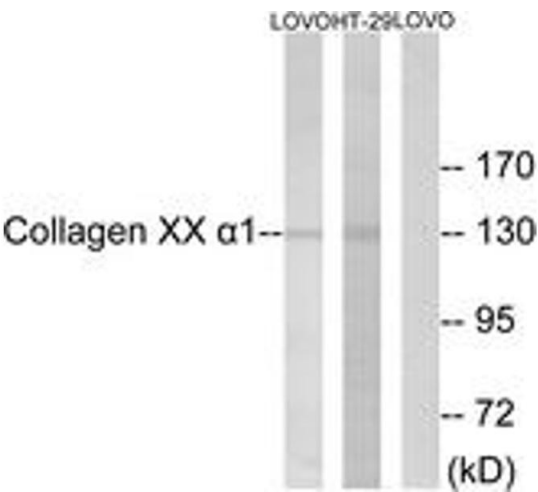
Immunohistochemistry

**Image 1.** Immunohistochemistry analysis of paraffin-embedded human brain tissue, using Collagen XX alpha1 Antibody. The picture on the right is treated with the synthesized peptide.



Immunofluorescence

**Image 2.** Immunofluorescence analysis of NIH-3T3 cells, using Collagen XX alpha1 Antibody. The picture on the right is treated with the synthesized peptide.



Western Blotting

**Image 3.** Western blot analysis of extracts from LOVO/HT-19 cells, using Collagen XX alpha1 Antibody. The lane on the right is treated with the synthesized peptide.