

Datasheet for ABIN1534370
anti-COX6C antibody (AA 11-60)

2 Images

[Go to Product page](#)

Overview

Quantity:	100 µg
Target:	COX6C
Binding Specificity:	AA 11-60
Reactivity:	Human, Mouse, Rat
Host:	Rabbit
Clonality:	Polyclonal
Conjugate:	This COX6C antibody is un-conjugated
Application:	Western Blotting (WB), ELISA, Immunofluorescence (IF)

Product Details

Immunogen:	The antiserum was produced against synthesized peptide derived from human COX6C.
Isotype:	IgG
Specificity:	COX6C Antibody detects endogenous levels of total COX6C protein.
Purification:	The antibody was purified from rabbit antiserum by affinity-chromatography using immunogen.
Purity:	> 95 %

Target Details

Target:	COX6C
Alternative Name:	COX6C (COX6C Products)
Background:	Synonyms: cytochrome c oxidase polypeptide Vic

Target Details

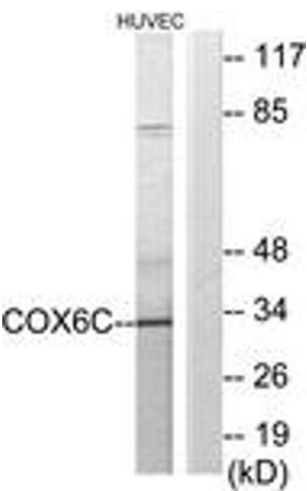
	NCBI Gene Symbol: COX6C
Molecular Weight:	8 kDa
Gene ID:	1345
OMIM:	124090
UniProt:	P09669
Pathways:	Proton Transport

Application Details

Application Notes:	WB: 1:500~1:1000 IF: 1:100~1:500 ELISA: 1:20000
Comment:	Unigene-Number: Hs.351875 (NCBI Gene Symbol: COX6C)
Restrictions:	For Research Use only

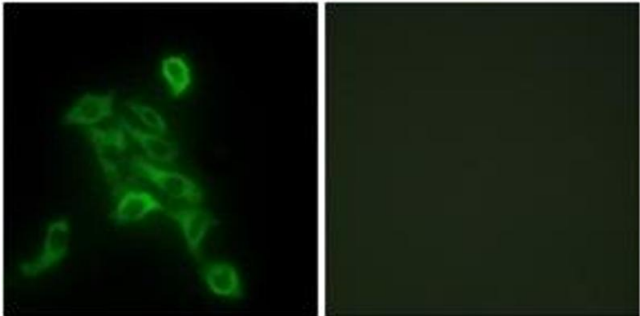
Handling

Format:	Liquid
Concentration:	1 mg/mL
Buffer:	phosphate buffered saline (without Mg ²⁺ and Ca ²⁺), pH 7.4, 150 mM NaCl, 0.02 % sodium azide and 50 % glycerol.
Preservative:	Sodium azide
Precaution of Use:	This product contains sodium azide: a POISONOUS AND HAZARDOUS SUBSTANCE which should be handled by trained staff only.
Storage:	-20 °C
Storage Comment:	Stable at -20°C for at least 1 year.
Expiry Date:	12 months



Western Blotting

Image 1. Western blot analysis of extracts from HuvEc cells, using COX6C Antibody. The lane on the right is treated with the synthesized peptide.



Immunofluorescence

Image 2. Immunofluorescence analysis of HepG2 cells, using COX6C Antibody. The picture on the right is treated with the synthesized peptide.