

Datasheet for ABIN1534374
anti-CYP1A1/2 antibody (AA 71-120)[Go to Product page](#)

1 Image

Overview

Quantity:	100 µg
Target:	CYP1A1/2
Binding Specificity:	AA 71-120
Reactivity:	Rat, Human, Mouse
Host:	Rabbit
Clonality:	Polyclonal
Conjugate:	This CYP1A1/2 antibody is un-conjugated
Application:	Western Blotting (WB), ELISA

Product Details

Immunogen:	The antiserum was produced against synthesized peptide derived from human Cytochrome P450 1A1/2.
Isotype:	IgG
Specificity:	Cytochrome P450 1A1/2 Antibody detects endogenous levels of total Cytochrome P450 1A1/2 protein.
Purification:	The antibody was purified from rabbit antiserum by affinity-chromatography using immunogen.
Purity:	> 95 %

Target Details

Target:	CYP1A1/2
---------	----------

Target Details

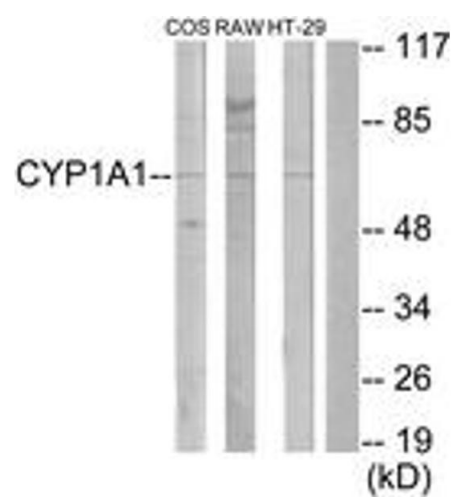
Alternative Name:	Cytochrome P450 1A1/2 (CYP1A1/2 Products)
Background:	Synonyms: AHH, AHRR, CP11, CYP1, CYP1A1, P1-450, P450 form 6, P450-C, P450-P1, P450DX, aryl hydrocarbon hydroxylase, cytochrome P1-450, dioxin-inducible, cytochrome P450 1A1, cytochrome P450 1A1 variant, cytochrome P450, family 1, subfamily A, polypeptide 1, cytoch NCBI Gene Symbol: CYP1A1/2
Molecular Weight:	58 kDa
Gene ID:	1543, 1544
OMIM:	108330
UniProt:	P04798 , P05177

Application Details

Application Notes:	WB: 1:500~1:1000 ELISA: 1:20000
Comment:	Unigene-Number: Hs.72912, Hs.1361 (NCBI Gene Symbol: CYP1A1)1544 (NCBI Gene Symbol: CYP1A2)
Restrictions:	For Research Use only

Handling

Format:	Liquid
Concentration:	1 mg/mL
Buffer:	phosphate buffered saline (without Mg ²⁺ and Ca ²⁺), pH 7.4, 150 mM NaCl, 0.02 % sodium azide and 50 % glycerol.
Preservative:	Sodium azide
Precaution of Use:	This product contains sodium azide: a POISONOUS AND HAZARDOUS SUBSTANCE which should be handled by trained staff only.
Storage:	-20 °C
Storage Comment:	Stable at -20°C for at least 1 year.
Expiry Date:	12 months



Western Blotting

Image 1. Western blot analysis of extracts from COS7/RAW264.7/HT-29 cells, using Cytochrome P450 1A1/2 Antibody. The lane on the right is treated with the synthesized peptide.