

Datasheet for ABIN1534389
anti-CYP2J2 antibody (AA 231-280)[Go to Product page](#)

3 Images

Overview

Quantity:	100 µg
Target:	CYP2J2
Binding Specificity:	AA 231-280
Reactivity:	Human
Host:	Rabbit
Clonality:	Polyclonal
Conjugate:	This CYP2J2 antibody is un-conjugated
Application:	Western Blotting (WB), Immunohistochemistry (IHC), ELISA, Immunofluorescence (IF)

Product Details

Immunogen:	The antiserum was produced against synthesized peptide derived from human Cytochrome P450 2J2.
Isotype:	IgG
Specificity:	Cytochrome P450 2J2 Antibody detects endogenous levels of total Cytochrome P450 2J2 protein.
Purification:	The antibody was purified from rabbit antiserum by affinity-chromatography using immunogen.
Purity:	> 95 %

Target Details

Target:	CYP2J2
---------	--------

Target Details

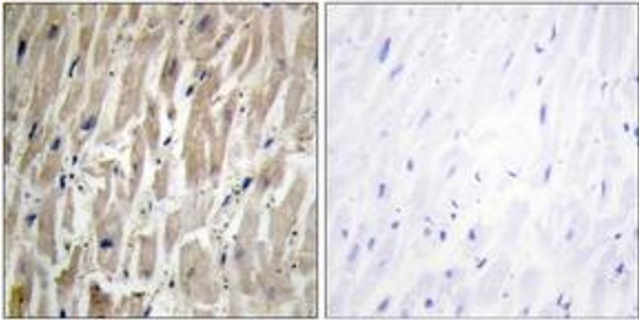
Alternative Name:	Cytochrome P450 2J2 (CYP2J2 Products)
Background:	Synonyms: Cytochrome P450 2J2, CYP11J2, Arachidonic acid epoxygenase, CP2J2 NCBI Gene Symbol: CYP2J2
Molecular Weight:	57 kDa
Gene ID:	1573
OMIM:	601258
UniProt:	P51589

Application Details

Application Notes:	WB: 1:500~1:1000 IHC: 1:50~1:100 IF: 1:100~1:500 ELISA: 1:10000
Comment:	Unigene-Number: Hs.152096 (NCBI Gene Symbol: CYP2J2)
Restrictions:	For Research Use only

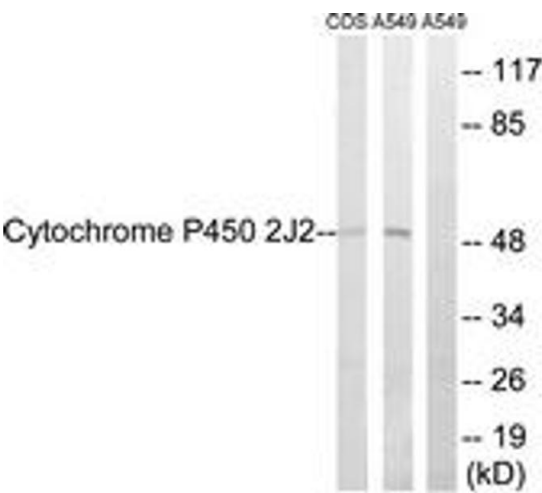
Handling

Format:	Liquid
Concentration:	1 mg/mL
Buffer:	phosphate buffered saline (without Mg ²⁺ and Ca ²⁺), pH 7.4, 150 mM NaCl, 0.02 % sodium azide and 50 % glycerol.
Preservative:	Sodium azide
Precaution of Use:	This product contains sodium azide: a POISONOUS AND HAZARDOUS SUBSTANCE which should be handled by trained staff only.
Storage:	-20 °C
Storage Comment:	Stable at -20°C for at least 1 year.
Expiry Date:	12 months



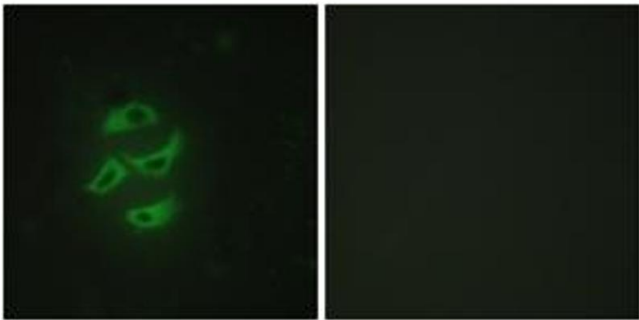
Immunohistochemistry (Paraffin-embedded Sections)

Image 1. Immunohistochemistry analysis of paraffin-embedded human heart tissue, using Cytochrome P450 2J2 Antibody. The picture on the right is treated with the synthesized peptide.



Western Blotting

Image 2. Western blot analysis of extracts from A549/COS7 cells, using Cytochrome P450 2J2 Antibody. The lane on the right is treated with the synthesized peptide.



Immunofluorescence

Image 3. Immunofluorescence analysis of HepG2 cells, using Cytochrome P450 2J2 Antibody. The picture on the right is treated with the synthesized peptide.